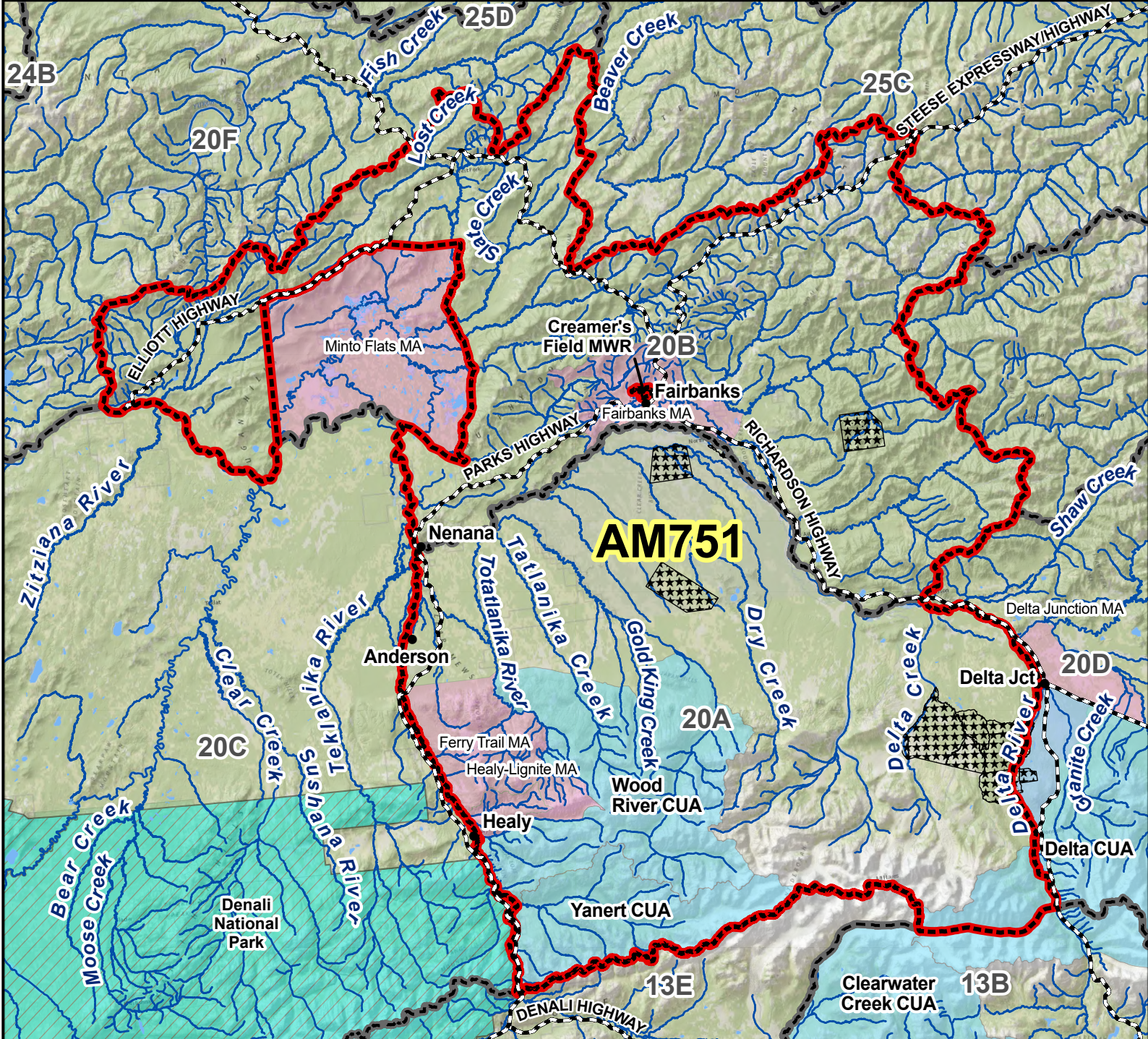


AM751 Moose Targeted Permit Hunt

This map is intended for hunt planning use, not for determining legal property or regulatory boundaries. Content is compiled from various sources and is subject to change without notice. See current hunting regulations for written descriptions of boundaries. Hunters are responsible for knowing the land ownership and regulations of the areas they intend to hunt.



AM751

AREA DESCRIPTION: Unit 20A; and 20B, excluding Creamer's Field Migratory Wildlife Refuge, Minto Flats Management Area, Middle Fork Chena River drainage and Salcha River drainage up stream of and including Butte Creek

N
0 10 20 40 Miles

- Hunt Area
- Subunit Boundary
- Closed Area
- Controlled Use Area
- Management Area
- National Park/Monument
- National Wildlife Refuge
- Military Closure
- Other State Areas
- Closed to Hunting

Please refer to the Alaska Hunting Regulations booklet for bag type, seasons, and additional regulations concerning this hunt.