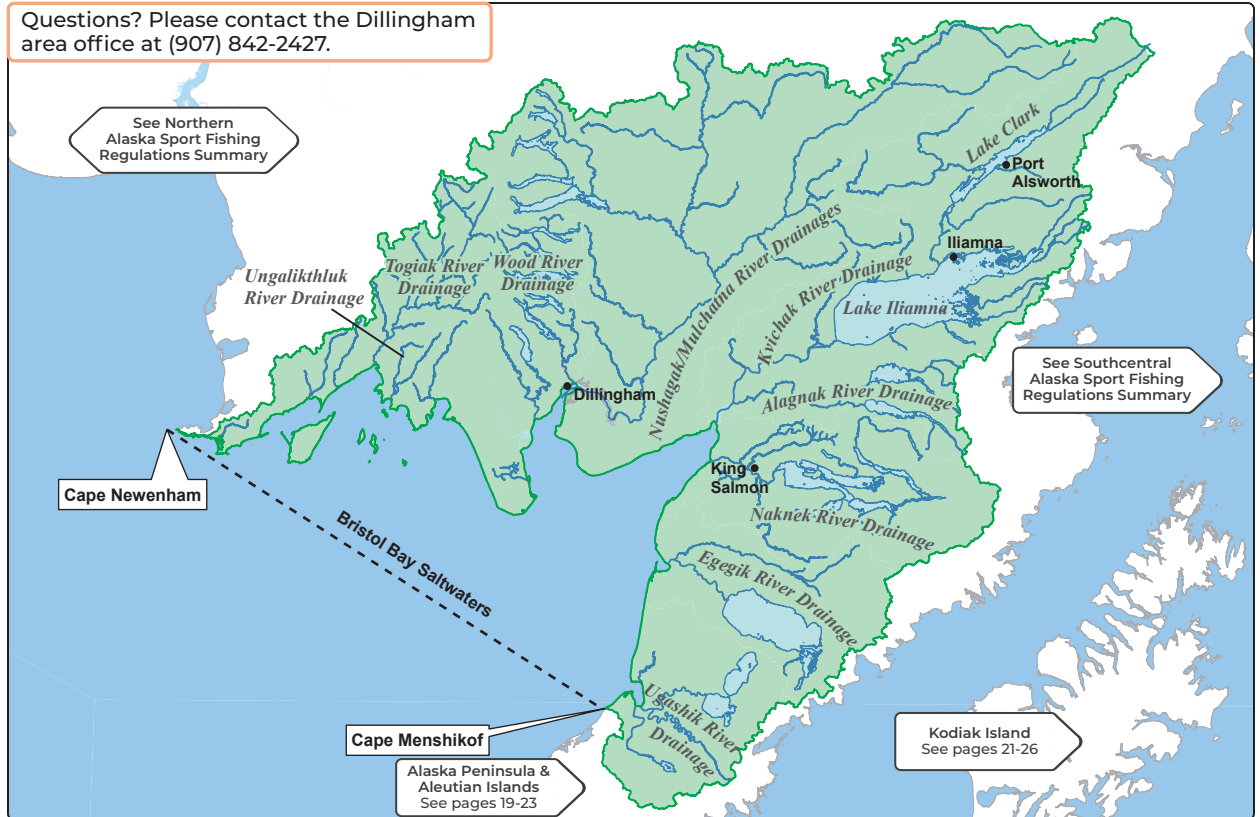


Questions? Please contact the Dillingham area office at (907) 842-2427.



## GENERAL REGULATIONS - BRISTOL BAY

**Inclusive waters:** All fresh waters draining into Bristol Bay between Cape Menshikof and Cape Newenham, and all salt waters east of a line from Cape Newenham to Cape Menshikof.

Fishing is open year-round for all species unless otherwise noted below or in special regulations.

**Stay legal - before you cast, check emergency orders at [www.adfg.alaska.gov/sf/EONR](http://www.adfg.alaska.gov/sf/EONR).**

### KING SALMON

- **May 1-July 31:** Open to king salmon fishing.
- There is an annual limit of 5 king salmon 20 inches or longer in Bristol Bay salt and fresh waters combined. Of those 5 total king salmon, no more than 4 may be harvested from the Nushagak/Mulchatna River Drainage, and no more than 2 may be harvested from the Wood River Drainage.
- If you retain a king salmon 20 inches or longer, you must immediately record that harvest. See page 4 for recording instructions.
- **Fresh Waters:**
  - **20 inches or longer:** 3 per day, 3 in possession, only 1 of which may be 28 inches or longer.
  - **Less than 20 inches:** 10 per day, 10 in possession.
  - King salmon removed from the water must be retained. Any king salmon removed from the fresh water drainages of Bristol Bay from Cape Menshikof to Cape Newenham **MUST BE RETAINED** and becomes part of the bag limit of the person who originally hooked it. If you intend to release a king salmon, you may not remove it from the water before releasing it.

*King salmon continued...*

### • Salt Waters:

- 3 per day, 3 in possession, only 2 of which may be 28 inches or longer.
- King salmon removed from the water must be retained. Any king salmon removed from the salt water of Bristol Bay from Cape Menshikof to Cape Newenham **MUST BE RETAINED** and becomes part of the bag limit of the person who originally hooked it. If you intend to release a king salmon, you may not remove it from the water before releasing it.

### **CHUM, COHO, PINK, & SOCKEYE SALMON (COMBO)**

- 5 per day, 5 in possession, no size limit.

### **ARCTIC CHAR/DOLLY VARDEN (COMBO)**

- **June 8-October 31:**
  - Open to Arctic char/Dolly Varden fishing.
  - 3 per day, 3 in possession, no size limit.
- **November 1-June 7:**
  - Open to Arctic char/Dolly Varden fishing.
  - 10 per day, 10 in possession, no size limit.

### **RAINBOW TROUT**

- **June 8-October 31:**
  - Open to rainbow trout fishing.
  - 2 per day, 2 in possession, only 1 of which may be 20 inches or longer.
- **November 1-June 7:**
  - Open to rainbow trout fishing.
  - 5 per day, 5 in possession, only 1 of which may be 20 inches or longer.

### **ARCTIC GRAYLING**

- 2 per day, 2 in possession, no size limit.

### **LAKE TROUT**

- 4 per day, 4 in possession, no size limit.

*...continued*

## NORTHERN PIKE

- 5 per day, 5 in possession, only 1 of which may be 30 inches or longer.

## BURBOT

- 15 per day, 15 in possession, no size limit.

## HALIBUT

Pacific halibut fisheries are managed by the federal government under international treaty. See page 7 for federal contact information.

- **February 1-December 31:** Open to halibut fishing.
- **Unguided anglers:** 2 per day, 4 in possession.
- **Consult federal regulations for the following:**
  - Bag, possession and size limits, and other regulations for guided (charter) anglers.
- **Filleting requirements for fish cleaned at sea:**
  - No person shall possess on board a vessel, including charter vessels and pleasure crafts used for fishing, Pacific halibut that have been filleted, mutilated, or otherwise disfigured in any manner, except that each Pacific halibut may be cut into no more than 2 ventral pieces, 2 dorsal pieces, and 2 cheek pieces, with a patch of skin on each piece, naturally attached.

## LINGCOD

- No limit.

## ROCKFISH

- No limit.

## OTHER FINFISH

- No limit.

Anglers must carry a deepwater release device onboard their vessel when sport fishing in salt water and are required to use the device to release rockfish that are not harvested at depth of capture or 100 feet. For more information on deepwater release devices, see page 35.

## Examples of Rockfish Release Devices



## KING CRAB

- **June 1-January 31:** Open to king crab.
- **Males only:** 6 per day, 6 in possession, 6½ inches or more. Shellfish harvest recording form required.

## DUNGENESS CRAB

- **Males only:** 12 per day, 12 in possession, 6½ inches or more. Shellfish harvest recording form required.

## TANNER CRAB

- **Males only:** 12 per day, 12 in possession, 5½ inches or more. Shellfish harvest recording form required.

## SHARKS (EXCEPT SPINY DOGFISH)

- 1 per day, 1 in possession, no size limit.
- Annual limit of 2 sharks. Harvest record required. See page 4 for recording instructions.

## SPINY DOGFISH

- 5 per day, 5 in possession, no size limit. A harvest record is not required.

## METHODS AND MEANS - BRISTOL BAY

### CHUMMING:

- In waters closed to the use of bait, sport fishing guides and guided anglers are prohibited from placing in the water any substance (bait) for the purpose of attracting fish by scent.

### SPORT FISHING GUIDES AND FISH RETENTION:

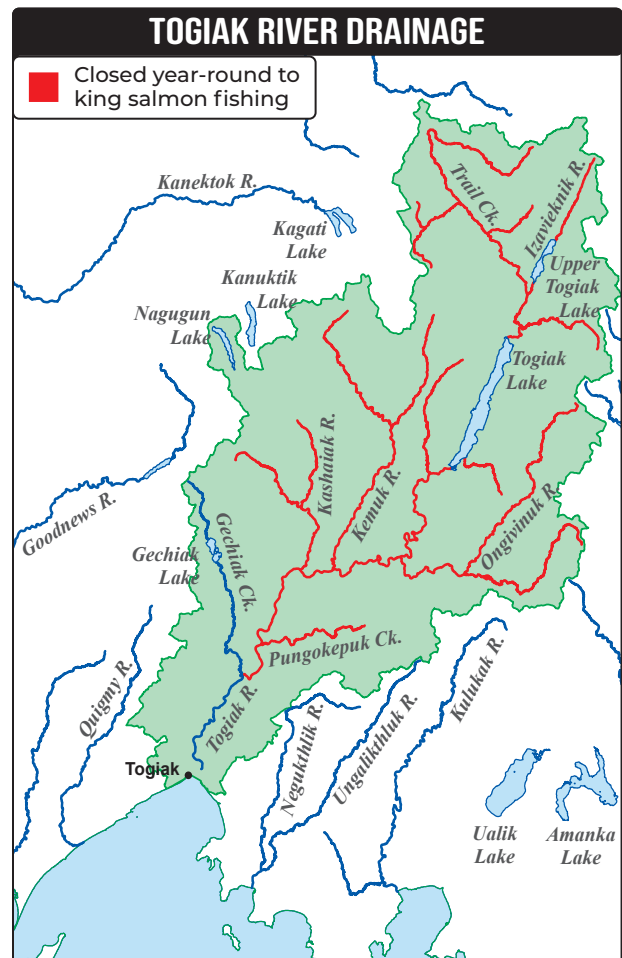
- A sport fishing guide may not retain fish while the guide is accompanying or personally directing the angler in fishing activities during any portion of a guided fishing trip.

## SPECIAL REGULATIONS - BRISTOL BAY TOGIAK RIVER DRAINAGE

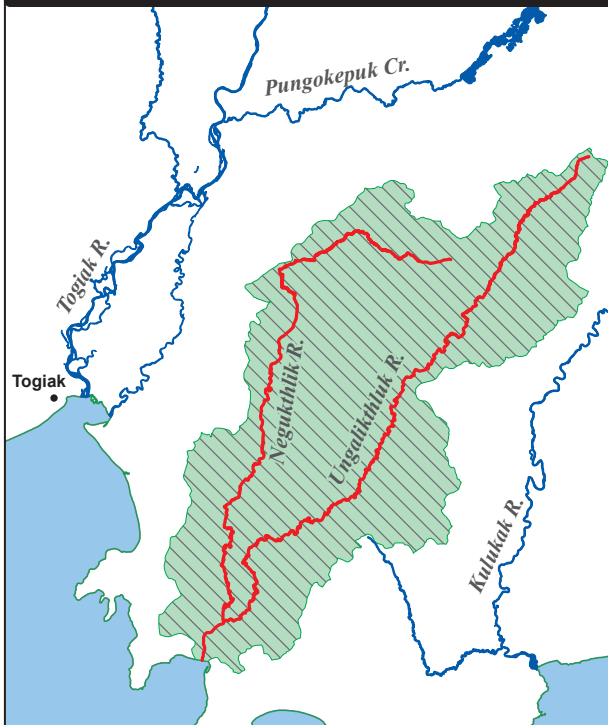
### TOGIAK RIVER DRAINAGE:

- Unbaited, single-hook, artificial lures or flies may be used year-round.
- **July 16-April 30:** Bait is allowed.
- **King salmon:**
  - **20 inches or longer: No retention allowed.** All king salmon 20 inches or longer caught may not be removed from the water and must be released immediately.
  - **Less than 20 inches:** 10 per day, 10 in possession.
- **Upstream of the confluence of Gechiak Creek and the Togiak River:**
  - **Closed year-round to king salmon fishing.**

...continued



## UNGALIKTHLUK RIVER DRAINAGE



- **April 10-June 7:** Closed to all sport fishing
- Only unbaited, single-hook, artificial lures or flies

### SPECIAL REGULATIONS - BRISTOL BAY UNGALIKTHLUK RIVER DRAINAGE

**UNGALIKTHLUK RIVER DRAINAGE** - including the Negukthlik River:

- **June 8-April 9:** Open to sport fishing.
- Only unbaited, single-hook, artificial lures or flies may be used.
- **Rainbow trout:**
  - **June 8-October 31:** Catch-and-release fishing only. All rainbow trout caught must be released immediately.
  - **November 1-April 9:** 5 per day, 5 in possession, only 1 of which may be 20 inches or longer.

### SPECIAL REGULATIONS - BRISTOL BAY WOOD RIVER DRAINAGE

**WOOD RIVER DRAINAGE:**

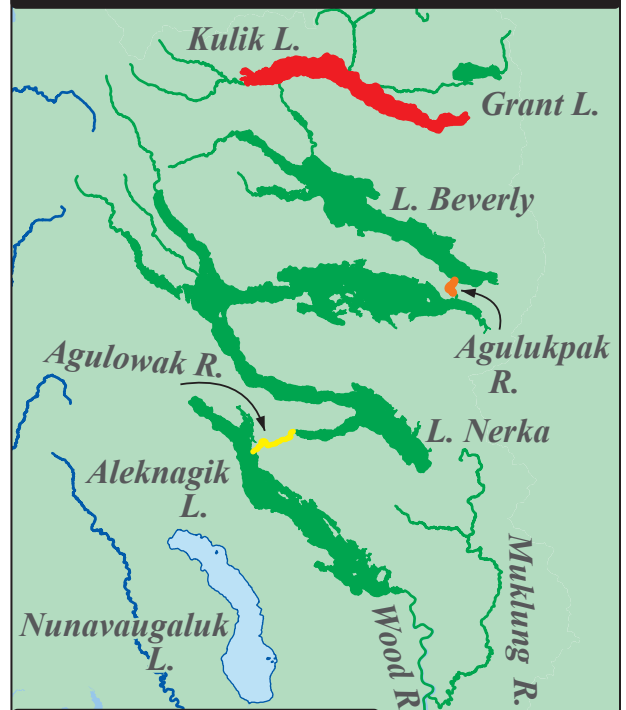
- Open year-round to sport fishing for species other than king salmon.
- **May 1-July 31:** Open to king salmon fishing.
  - **King salmon:**
    - **20 inches or longer:** 1 per day, 1 in possession, only 1 of which may be 28 inches or longer.
      - There is an annual limit of 2 king salmon over 20 inches taken from the Wood River drainage.
      - All harvested king salmon 20 inches or longer must be recorded; see page 4.
    - **Less than 20 inches:** 10 per day, 10 in possession.

Wood River Drainage continued...

- **Agulowak River** - from an ADF&G regulatory marker at the outlet of Lake Nerka, downstream to Lake Aleknagik, including waters of Lake Aleknagik within ½ mile of the Agulowak River outlet:
  - Only unbaited, single-hook, artificial lures or flies may be used.
  - **Rainbow trout:** 1 per day, 1 in possession.
  - **Arctic char/Dolly Varden:** 2 per day, 2 in possession.
- **Agulukpak River** - from the outlet of Lake Beverly to the island located 1.2 miles downstream:
  - **September 1-June 7:** Only unbaited, single-hook, artificial lures or flies may be used.
  - **June 8-August 31:** Only unbaited, single-hook, artificial flies may be used.
  - **Rainbow trout:**
    - **June 8-October 31:** Catch-and-release fishing only. All rainbow trout caught must be released immediately.
    - **November 1-June 7:** 5 per day, 5 in possession, only 1 of which may be 20 inches or longer.
- **Kulik Lake:**
  - **Northern pike:**
    - **Less than 30 inches:** 5 per day, 5 in possession.
    - **30 inches or longer:** **No retention of northern pike.** All northern pike 30 inches or longer caught must be released immediately.

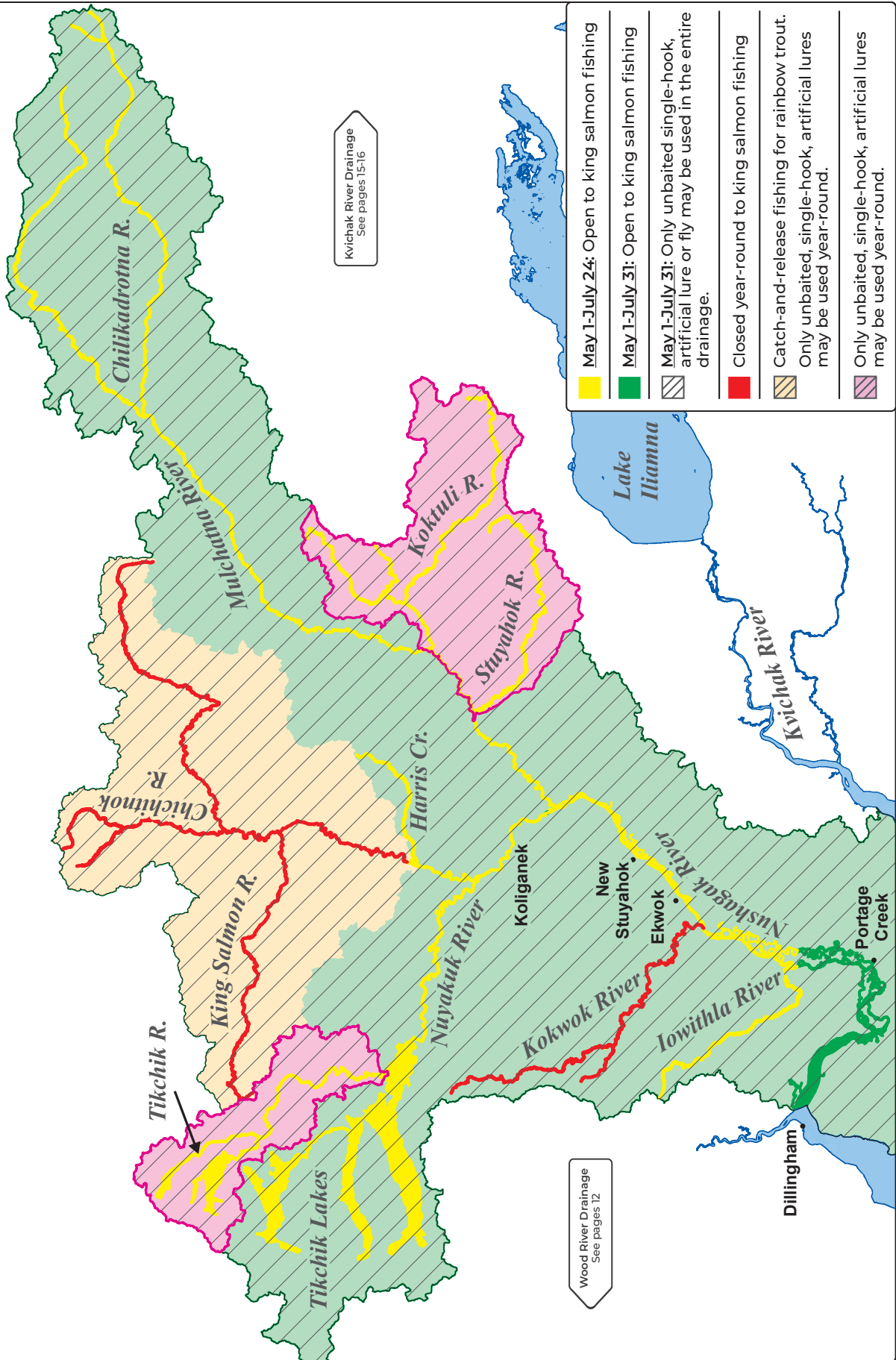
...continued

## WOOD RIVER DRAINAGE



- No retention of northern pike 30 inches or longer
- **September 1-June 7:** Only unbaited, single-hook, artificial lures or flies
- June 8-August 31:** Only unbaited, single-hook, artificial flies
- Only unbaited, single-hook, artificial lures or flies

**NUSHAGAK/MULCHATNA RIVER DRAINAGE**



The Nushagak/Mulchatna Chinook Salmon Management Plan may require inseason adjustments to special regulations by emergency orders for seasons, bag limits, gear, and waters open to fishing, depending on escapement levels of Chinook salmon. Please see page 3 for more information on how to check for emergency orders in the area where you are fishing.

## SPECIAL REGULATIONS - BRISTOL BAY NUSHAGAK/MULCHATNA RIVER DRAINAGE

### **NUSHAGAK/MULCHATNA DRAINAGE:**

- Open year-round to sport fishing for species other than king salmon.

**NEW** **May 1-July 31:** Only **unbaited** single-hook artificial lures or flies may be used. **The use of bait is prohibited.** See pages 6-7 for the number of allowable hooks per targeted species.

- **August 1-April 30:** Bait and multiple hooks are allowed.
- **In waters of the Nushagak/Mulchatna River drainage open to king salmon fishing:**
  - **King salmon:**
    - **20 inches or longer:** 2 per day, 2 in possession, only 1 of which may be 28 inches or longer.
      - There is an annual limit of 4 king salmon over 20 inches taken from the entire Nushagak/Mulchatna drainage, only 1 of which may be 28 inches or longer.
      - All harvested king salmon 20 inches or longer must be recorded. See page 4.
    - **Less than 20 inches:** 5 per day, 5 in possession.
  - **From its confluence with the Iowithla River, upstream to Harris Creek, including the Iowithla River:**
    - **May 1-July 24:** Open to king salmon fishing.
  - **Upstream of its confluence with Harris Creek:**
    - **Closed year-round to king salmon fishing.**
    - **The use of bait is prohibited.** Only unbaited, single-hook, artificial lures may be used year-round.
    - **Rainbow trout:** Catch-and-release fishing only. All rainbow trout caught must be released immediately.

### **KOKTULI RIVER DRAINAGE:**

- Open year-round to sport fishing for species other than king salmon.
- **May 1-July 24:** Open to king salmon fishing.
- Only unbaited, single-hook, artificial lures or flies may be used year-round.

### **KOKWOK RIVER - including waters of the Nushagak River within ¼ mile of its confluence with the Kokwok River:**

- Open year-round to sport fishing for species other than king salmon.
- **Closed year-round to king salmon fishing.**

### **MULCHATNA RIVER DRAINAGE - from ADF&G markers about 1½ miles downstream from the Stuyahok River outlet, upstream to markers about 1½ miles upstream from the Kuktuli River outlet:**

- Open year-round to sport fishing for species other than king salmon.
- **May 1-July 24:** Open to king salmon fishing.
- Only unbaited, single-hook, artificial lures or flies may be used year-round.

### **NUYAKUK RIVER - from the outlet of Tikchik Lake to an island located about 2 miles downstream from Nuyakuk Falls:**

- Open year-round to sport fishing for species other than king salmon.
- **May 1-July 24:** Open to king salmon fishing.
- Only unbaited, single-hook, artificial lures or flies may be used year-round.

### **STUYAHOK RIVER DRAINAGE:**

- Open year-round to sport fishing for species other than king salmon.
- **May 1-July 24:** Open to king salmon fishing.
- Only unbaited, single-hook, artificial lures or flies may be used year-round.

### **TIKCHIK RIVER DRAINAGE:**

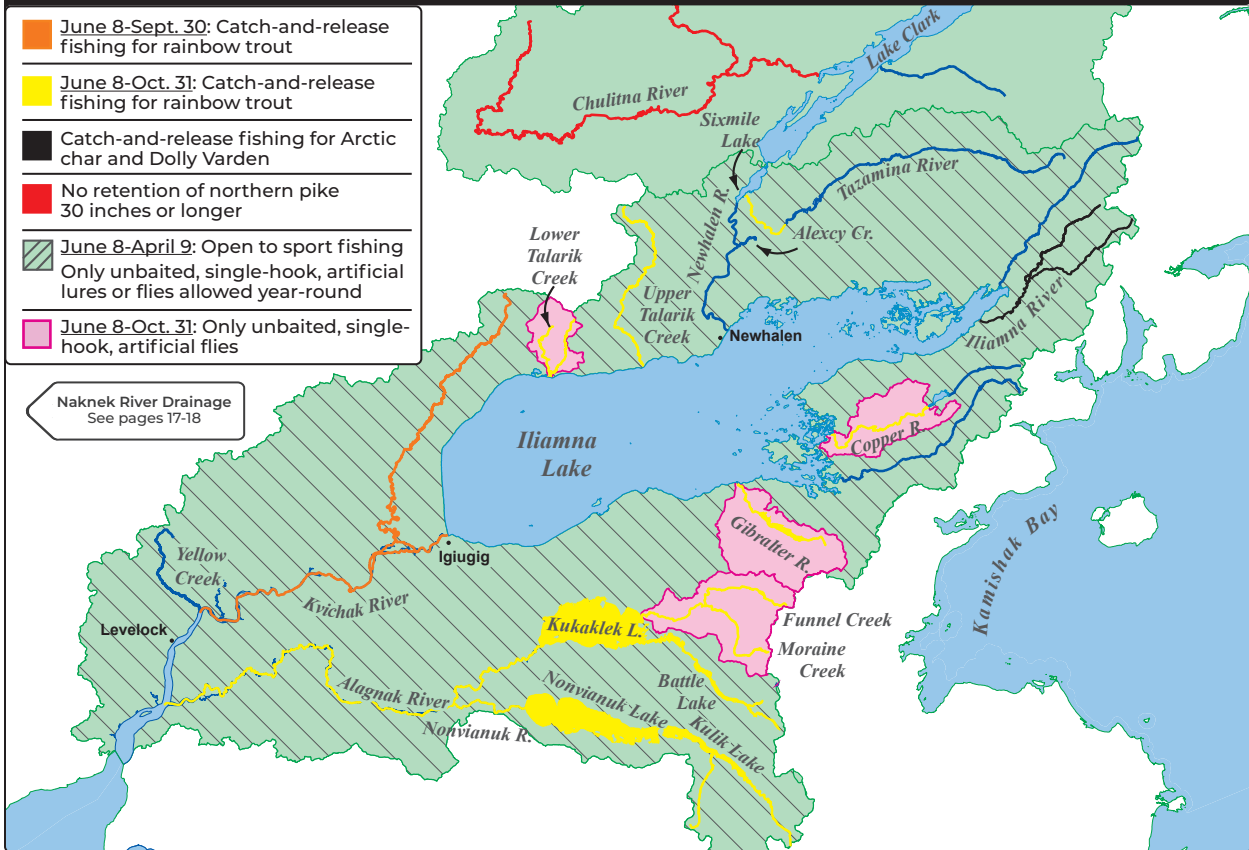
- Open year-round to sport fishing for species other than king salmon.
- **May 1-July 24:** Open to king salmon fishing.
- Only unbaited, single-hook, artificial lures or flies may be used year-round.

...continued



Dave Killeen, chum salmon, Saltery Creek

## ALAGNAK/KVICHAK RIVER DRAINAGE



The Kvichak In-River Sockeye Salmon Management Plan may require inseason adjustments to the regulations by emergency orders for bag limits and waters open to fishing, depending on escapement levels of sockeye salmon. Please see page 3 for more information on how to check for emergency orders in the area where you are fishing.

### SPECIAL REGULATIONS - BRISTOL BAY ALAGNAK RIVER DRAINAGE

**ALAGNAK RIVER DRAINAGE** (Unless further restricted below. See map above):

Use of helicopters for transporting anglers and sport-caught fish is prohibited.

- **Chum, coho, pink, and sockeye salmon (combo):**
  - 5 per day, 5 in possession, only 3 per day, 3 in possession may be coho salmon.
- **King salmon:** See general regulations and limits on page 10.
- **Rainbow trout:**
  - **June 8-October 31:** Catch-and-release fishing only. All rainbow trout caught must be released immediately.
  - **November 1-April 9:** 5 per day, 5 in possession, must be less than 18 inches long.
- **Alagnak River Drainage - all flowing waters of the Alagnak River drainage, including lake waters within ½ mile of all inlet and outlet streams:**
  - **June 8-April 9:** Open to sport fishing.
  - Only unbailed, single-hook, artificial lures or flies may be used.

**MORaine Creek Drainage** (all flowing waters):

- **June 8-April 9:** Open to sport fishing.
- **June 8-October 31:** Only unbailed, single-hook, artificial flies may be used.

### SPECIAL REGULATIONS - BRISTOL BAY KVICHAK RIVER DRAINAGE

**CHULITNA RIVER DRAINAGE** - including waters of Lake Clark within 1 mile of the Chulitna River:

- Open year-round to sport fishing.
- **Northern pike:**
  - **Less than 30 inches:** 5 per day, 5 in possession.
  - **30 inches or longer:** **No retention of northern pike is allowed.** All northern pike 30 inches or longer caught must be immediately released.

**COPPER RIVER DRAINAGE** - including all flowing waters downstream from Lower Copper Lake and the waters of Lake Iliamna within ½ mile of the Copper River mouth:

- **June 8-April 9:** Open to sport fishing.
- **June 8-October 31:** **The use of bait is prohibited.** Only unbailed, single-hook, artificial flies may be used.
- **Rainbow trout:**
  - **June 8-October 31:** Catch-and-release fishing only. All rainbow trout caught must be released immediately.

...continued

**GIBRALTAR RIVER DRAINAGE** - including all flowing waters and the waters of Lake Iliamna within ½ mile of the Gibraltar River mouth:

- **June 8-April 9:** Open to sport fishing.
- **June 8-October 31: The use of bait is prohibited.** Only unbaited, single-hook, artificial flies may be used.
- **Rainbow trout:**
  - **June 8-October 31:** Catch-and-release fishing only. All rainbow trout caught must be released immediately.

**ILIAMNA LAKE** and all its tributaries, including the Newhalen River and tributaries, upstream to the outlet of Lake Clark:

- Open year-round to sport fishing, **except in lake waters within a ½ mile radius from inlet or outlet streams.**
- Only unbaited, single-hook, artificial lures or flies may be used year-round, **except in lake waters more than a ½ mile radius from inlet or outlet streams.**
- **All flowing waters, and lake waters within a ½ mile radius of inlet or outlet streams:**
  - **April 10-June 7: Closed to sport fishing.**
  - **Rainbow trout:**
    - **June 8-October 31:** 1 per day, 1 in possession, no size limit.
    - **November 1-April 9:** 5 per day, 5 in possession, only 1 of which may be 20 inches or longer.
- **In lake waters more than ½ mile radius from inlet or outlet streams:**
  - General regulations and limits apply.

**ILIAMNA RIVER DRAINAGE:**

- **June 8-April 9:** Open to sport fishing.
- **Arctic char/Dolly Varden:** Catch-and-release fishing only. All Arctic char and Dolly Varden caught must be released immediately.

**KVICHAK RIVER DRAINAGE:**

**Use of helicopters for transporting anglers and sport-caught fish is prohibited in the Kvichak River drainage.**

- Chum, coho, pink, and sockeye salmon (combo), **excluding the Alagnak River drainage:**
  - 5 per day, 5 in possession, only 2 per day, 2 in possession may be coho salmon.
- **Kvichak River upstream from its outlet in Kvichak Bay to Iliamna Lake:**
  - **April 10-June 7: Closed to sport fishing.**
  - Only unbaited, single-hook, artificial lures or flies may be used year-round, **except in lake waters more than a ½ mile radius from inlet or outlet streams.**
- **Kvichak River from Kvichak Bay upstream to an ADF&G marker at the confluence of Yellow Creek:**
  - **Rainbow trout:**
    - **June 8-October 31:** 1 per day, 1 in possession, no size limit.
    - **November 1-April 9:** 5 per day, 5 in possession, only 1 of which may be 20 inches or longer.

*Kvichak River Drainage continued...*

- **From an ADF&G regulatory marker at the confluence of Yellow Creek upstream to the waters of Iliamna Lake within a ½ mile radius of its outlet at Igiugig:**
  - **Rainbow trout:**
    - **June 8-September 30:** Catch-and-release fishing only. All rainbow trout caught must be released immediately.
    - **October 1-October 31:** 1 per day, 1 in possession, no size limit.
    - **November 1-April 9:** 5 per day, 5 in possession, only 1 of which may be 20 inches or longer.

**LOWER TALARIK CREEK** - including waters of Lake Iliamna within ½ mile of the Lower Talarik Creek mouth:

- **June 8-October 31: The use of bait is prohibited.** Only unbaited, single-hook, artificial flies may be used.
- **Rainbow trout:**
  - **June 8-October 31:** Catch-and-release fishing only. All rainbow trout caught must be released immediately.

**SIXMILE LAKE AND LAKE CLARK:**

- **In all tributaries upstream of Sixmile Lake, including Lake Clark:**
  - Open year-round to sport fishing.
  - **Rainbow trout:**
    - **June 8-October 31:** 1 per day, 1 in possession, no size limit.
    - **November 1-June 7:** 5 per day, 5 in possession, only 1 of which may be 20 inches or longer.

**TAZIMINA RIVER** - from the falls, downstream to 1 mile upstream of its outlet into Sixmile Lake:

- **June 8-April 9:** Open to sport fishing.
- **Rainbow trout:**
  - **June 8-October 31:** Catch-and-release fishing only. All rainbow trout caught must be released immediately.

**UPPER TALARIK CREEK** - including waters of Lake Iliamna within ½ mile of the Upper Talarik Creek mouth:

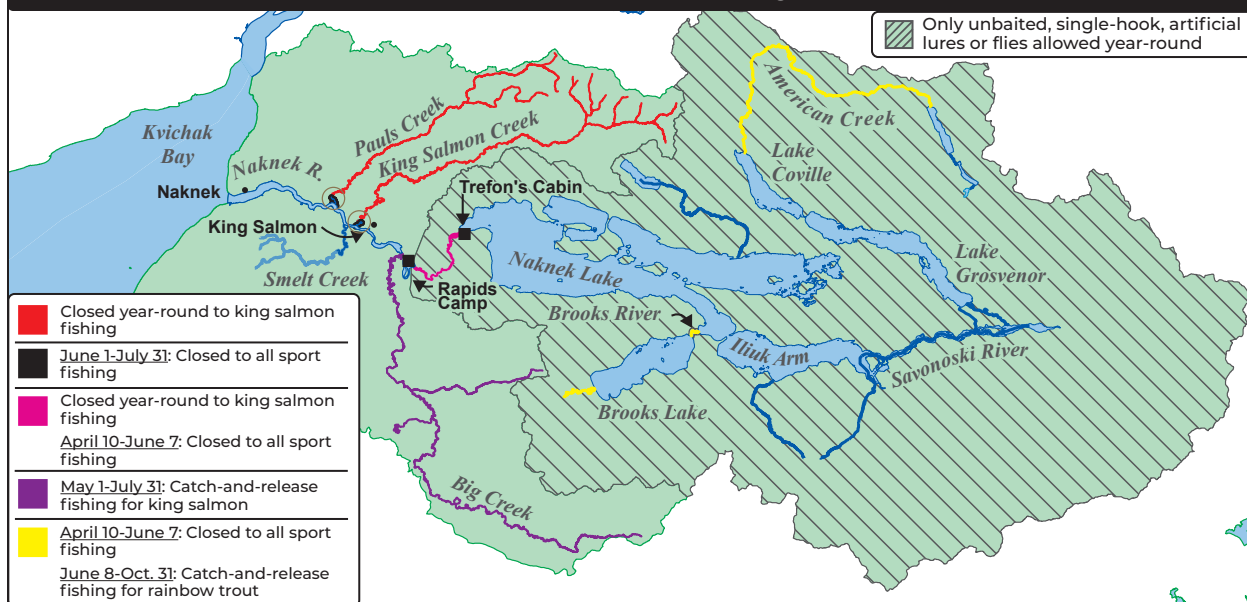
- **Rainbow trout:**
  - **June 8-October 31:** Catch-and-release fishing only. All rainbow trout caught must be released immediately.

### **BE AWARE:** Boater and Float Plane Traffic on the Naknek River

A friendly reminder for all users of the Naknek River - boaters and float plane pilots alike - to use extra caution between Eskimo Creek and Grassy Point. With frequent float plane activity and limited visibility, it's important to stay alert, watch for one another, communicate when possible, and avoid sudden maneuvers. Keeping an eye out helps everyone enjoy the river safely!

*...continued*

## NAKNEK RIVER DRAINAGE



### SPECIAL REGULATIONS - BRISTOL BAY NAKNEK RIVER DRAINAGE

#### NAKNEK RIVER DRAINAGE:

- Open year-round to sport fishing.
- **Rainbow trout:**
  - **June 8-October 31:** Unless further restricted below, in the Naknek River drainage, 1 per day, 1 in possession, must be less than 18 inches long.
  - **November 1-June 7:** 5 per day, 5 in possession, must be less than 18 inches long.
- **In waters of the Naknek River drainage open to king salmon fishing:**
  - **King salmon:**
    - **20 inches or longer:** 3 per day, 3 in possession, only 1 of which may be 28 inches or longer.
- **NEW** There is an annual limit of 5 king salmon over 20 inches taken from the entire Naknek River drainage, **only 2 of which may be over 28 inches long.** All harvested king salmon 20 inches or longer must be recorded. See page 4 for recording instructions.
  - Less than 20 inches: 10 per day, 10 in possession.
- **In all flowing waters:**
  - **March 1-November 14:** Only unbaited, artificial lures or flies may be used.
- **In all flowing waters upstream from an ADF&G regulatory marker located ½ mile upstream of Rapids Camp, including all waters within ¼ mile of all lake inlet and outlet streams:**
  - Only unbaited, single-hook, artificial lures or flies may be used year-round.
- **Upstream from ADF&G markers located ½ mile above Rapids Camp to ADF&G markers at Trefon's cabin at the outlet of Naknek Lake:**
  - **Closed year-round to king salmon fishing.**
  - **June 8-April 9:** Open to sport fishing.
  - **March 1-April 9 and June 8-July 31:** Only unbaited, single-hook, artificial lures or flies with a gap between the point and shank of ½ inch or less are allowed. For the remainder of the year, only unbaited, single-hook, artificial lures or flies may be used.

Naknek River Drainage continued...

- **Within a 1/4 mile radius of Big Creek:**
  - **May 1-July 31:** Open to king salmon fishing. Bag limits and gear restrictions are the same as the remainder of the Naknek River.

#### **NAKNEK RIVER YOUTH-ONLY FISHERY:**

- If you are 15 years of age and younger, you may fish for all species in the designated Youth-Only fishery areas. Follow the Naknek River special regulations for king salmon and rainbow trout gear and bag limits, and general regulations for all other species and bag limits.
- A person 16 years or older may not sport fish on the Naknek River in the designated Youth-Only fishery areas on the dates listed below:
  - **Naknek River: June 7:** Open to sport fishing.
  - **Between the ADF&G regulatory markers posted above Rapids Camp:**
    - Open to sport fishing on the second Sunday in July. **In 2026, this will be July 12, 2026.**
  - **Between the ADF&G regulatory markers posted above and below the mouth of King Salmon Creek including King Salmon Creek:**
    - Open to sport fishing on the second Sunday in August. **In 2026, this will be August 9, 2026.**

#### **AMERICAN CREEK:**

- Only unbaited, single-hook, artificial lures or flies may be used year-round.
- **June 8-April 9:** Open to sport fishing.
- **Rainbow trout:**
  - **June 8-October 31:** Catch-and-release fishing only. All rainbow trout caught must be released immediately.
  - **November 1-April 9:** 5 per day, 5 in possession, only 1 of which may be 20 inches or longer.

#### **BIG CREEK - upstream of its confluence with the Naknek River:**

- Open year-round to sport fishing for species other than king salmon.
- **May 1-July 31:** Catch-and-release fishing only for king salmon. All king salmon caught must be released immediately.

...continued

Brooks River and Brooks Camp are within the Katmai National Park. Additional National Park regulations may apply to the access and conduct of the fishery. Please call (907) 246-3305 for more information.

#### **BROOKS RIVER DRAINAGE:**

- **Rainbow trout:**
  - **June 8-October 31:** Catch-and-release fishing only. All rainbow trout caught must be released immediately.
  - **November 1-June 7:** 5 per day, 5 in possession, must be less than 18 inches long.
- **In all flowing waters of the Brooks River drainage, including lake waters within ¼ mile of all inlet and outlet streams and waters of Naknek Lake within ¼ mile of the outlet of the Brooks River:**
  - **June 8-April 9:** Open to sport fishing.
  - **June 8-October 31:** Only unbaited, single-hook, artificial flies may be used.
- **Rainbow trout:**
  - **November 1-April 9:** 5 per day, 5 in possession, must be less than 18 inches long.
- **The outlet of Brooks Lake downstream to the bridge at Brooks Camp:**
  - Catch-and-release fishing only. All fish species caught must be released immediately.

#### **KING SALMON CREEK:**

- **Downstream from the upstream side of the Alaska Peninsula Highway Bridge:**
  - **August 1-May 31:** Open to sport fishing.
- **Rainbow trout:**
  - **August 1-October 31:** 1 per day, 1 in possession, must be less than 18 inches long.
  - **November 1-May 31:** 5 per day, 5 in possession, must be less than 18 inches long.
  - **June 1-July 31:** Closed to all sport fishing.
- **Upstream of the Alaska Peninsula Highway Bridge:**
  - Open year-round to sport fishing for species other than king salmon.
  - **Closed year-round to king salmon fishing.**
  - **Rainbow trout:** 1 per day, 1 in possession, must be less than 18 inches long.

#### **PAUL'S CREEK:**

- **Downstream from the upstream side of the Alaska Peninsula Highway Bridge:**
  - **August 1-May 31:** Open to sport fishing.
- **Rainbow trout:**
  - **August 1-October 31:** 1 per day, 1 in possession, must be less than 18 inches long.
  - **November 1-May 31:** 5 per day, 5 in possession, must be less than 18 inches long.
  - **June 1-July 31:** Closed to all sport fishing.
- **Upstream of the Alaska Peninsula Highway Bridge:**
  - Open year-round to sport fishing for species other than king salmon.
  - **Closed year-round to king salmon fishing.**
  - **Rainbow trout:** 1 per day, 1 in possession, must be less than 18 inches long.

**SAVONOSKI RIVER DRAINAGE** - including the waters of Naknek Lake within ¼ mile of the mouth of the Savonoski River, and including Lake Coville and Lake Grosvenor, but excluding American Creek:

- Open year-round to sport fishing.
- **Rainbow trout:**
  - **June 8-October 31:** 1 per day, 1 in possession, no size limit.
  - **November 1-June 7:** 5 per day, 5 in possession, only 1 of which may be 20 inches or longer.

**ELEGIK RIVER DRAINAGE** - all waters, including Becharof Lake:

- Open year-round to sport fishing.
- **Rainbow trout:**
  - **June 8-October 31:** 1 per day, 1 in possession, no size limit.
  - **November 1-June 7:** 5 per day, 5 in possession, only 1 of which may be 20 inches or longer.
- **At Becharof Lake outlet, including the waters of Becharof Lake within ¼ mile of the outlet and the waters of the Egegik River within ¼ mile of the outlet:**
  - **Arctic grayling:** Catch-and-release fishing only. All Arctic grayling caught must be released immediately.



**UGASHIK RIVER DRAINAGE** - including Ugashik Lakes:

- Open year-round to sport fishing.
- **Rainbow trout:**
  - **June 8-October 31:** 1 per day, 1 in possession, no size limit.
  - **November 1-June 7:** 5 per day, 5 in possession, only 1 of which may be 20 inches or longer.
- **In Ugashik Narrows (the waters from the outlet of Upper Ugashik Lake downstream to the inlet of Lower Ugashik Lake, including those waters of Upper and Lower Ugashik Lakes within ¼ mile of the Ugashik Narrows):**
  - **Arctic grayling:** Catch-and-release fishing only. All Arctic grayling caught must be released immediately.
- **The Ugashik River:**
  - **Closed year-round to Arctic grayling fishing.**
- **In the remainder of the Ugashik drainage, including Ugashik Lakes and all Ugashik tributaries:**
  - **Arctic grayling:** 2 per day, 2 in possession.