

SHELLFISH REGULATIONS

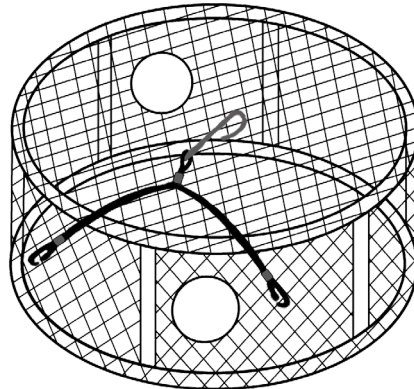
SPORT AND PERSONAL USE

SOUTHWEST ALASKA

LEGAL GEAR REQUIREMENTS FOR HARVESTING SHELLFISH

- **Crab** may only be taken with pots or ring nets; by diving gear or dip nets; by hooked or hookless lines either operated by hand or attached to a pole; or by hand.
- **Shrimp** may only be taken with pots or ring nets.
- **Clams** may only be taken with rakes, shovels, manually operated clam guns, or by hand.
- **Octopus** are occasionally caught in crab pots. Octopus are defined as "other shellfish." There are no closed seasons, and no bag or possession limits. Octopus may be taken only by pots or hook and line.
- No more than 5 pots of any size per person, and 10 pots per vessel, may be used to take shellfish at any time.
- If a keg or buoy is used on shellfish gear, the first initial, last name, and home address of the person operating the pot must be legibly written on the keg or buoy. In addition, the vessel's name or DMV registration number used to set the gear must also be written on the keg or buoy. Adding a phone number is recommended.
- All pots must include an escape mechanism in accordance with shellfish harvest regulations (5 AAC 39.145).

Exception 1: Dungeness crab pots may only have the pot lid tie-down straps secured to the pot at one end by a single loop of untreated 100 percent cotton twine no larger than 60-thread.



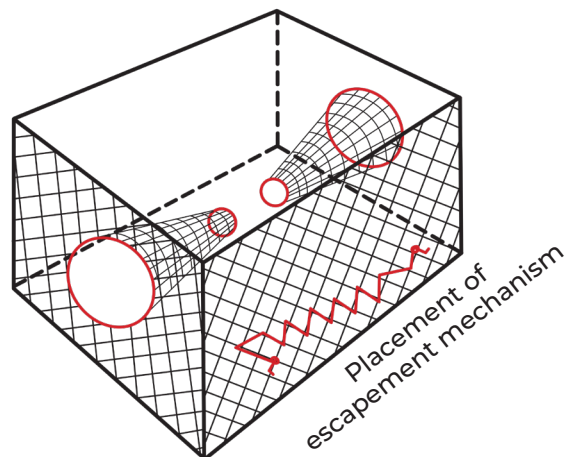
Dungeness crab pot Exception 1. See text above.

Exception 2: Tanner crab and shrimp pots may use 36-thread twine (or smaller) and a galvanic timed-release device (GTR) in their 18 inch (or 6 inch for shrimp pots) opening. The GTR must be designed to release in no more than 30 days in salt water, and must be integral to the length of the twine so that when the device releases, the twine will no longer secure or obstruct the opening of the pot. The twine may be knotted only at each end and at the attachment points on the GTR.

SHELLFISH POT GEAR ESCAPE MECHANISMS

Summary of 5 AAC 39.145

- Pot gear must include escape mechanisms to avoid waste of the resource in case the pot is lost.
- A sidewall, which may include the tunnel, must contain an opening at least 18 inches long (6 inches long for shrimp pots). The opening must be within 6 inches of the bottom of the pot, and must be parallel to the bottom of the pot.
- The opening must be laced, sewn, or secured together by a single length of untreated, 100 percent cotton twine no larger than 30-thread. The cotton twine may be knotted at each end only. The cotton twine may not be looped around or tied to the web bars.



The captain and crew members of a charter vessel may not deploy, set, or retrieve their own gear in a subsistence, sport, or personal use fishery while the vessel is being chartered.

An owner, operator, or employee of a lodge, charter vessel, or similar business that provides food, lodging, or sport fishing guide services may not provide clients or guests with subsistence, sport, or personal use-caught shellfish, unless the shellfish:

1. Was caught by the client or guest using gear they deployed and retrieved;
2. Was taken with gear marked with the client's or guest's name and address; and
3. Is for the personal consumption by the client or guest, or consumed in their presence.

SHELLFISH REGULATIONS

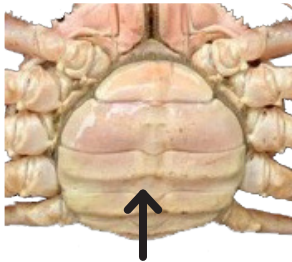
CRAB ID AND MEASUREMENTS

TANNER CRAB

Minimum size 5½ inches

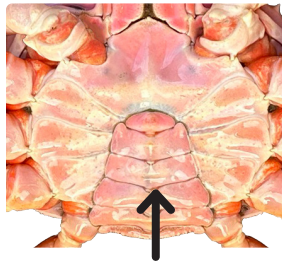
FEMALE

NO HARVEST ALLOWED

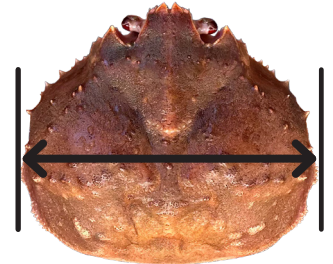


A wide uneven abdominal flap covers most of the underside, with females typically smaller than 5½ inches

MALE



A narrow triangular abdominal flap covers the underside



+5.5 inches

The width of a Tanner crab is measured as the straight-line distance across the carapace, **including** the spines

DUNGENESS CRAB

Minimum size 6½ inches

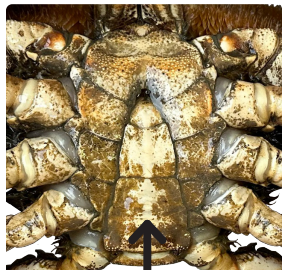
FEMALE

NO HARVEST ALLOWED



A wide uneven abdominal flap covers most of the underside

MALE



A narrow triangular abdominal flap covers the underside



+6.5 inches

The width of a Dungeness crab is measured as the straight-line distance across the carapace, **excluding** the spines

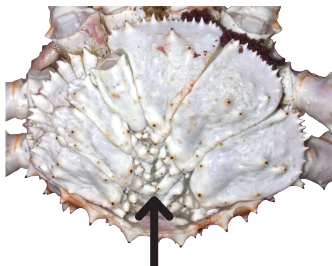
KING CRAB

Alaska Peninsula & Aleutian Islands only open to golden king crab - minimum size 6½ inches

Kodiak Island is closed for all three species

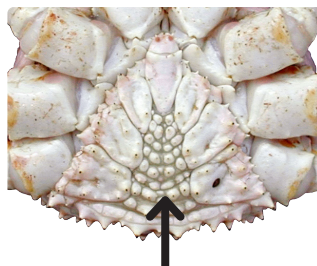
FEMALE

NO HARVEST ALLOWED



A wide uneven abdominal flap covers most of the underside

MALE



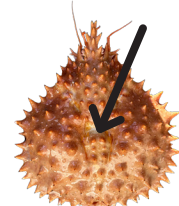
A narrow triangular abdominal flap covers the underside

6 prominent spines on mid-dorsal plate



RED KING CRAB

5 to 9 spines on mid-dorsal plate



GOLDEN KING CRAB

4 prominent spines on mid-dorsal plate



BLUE KING CRAB