


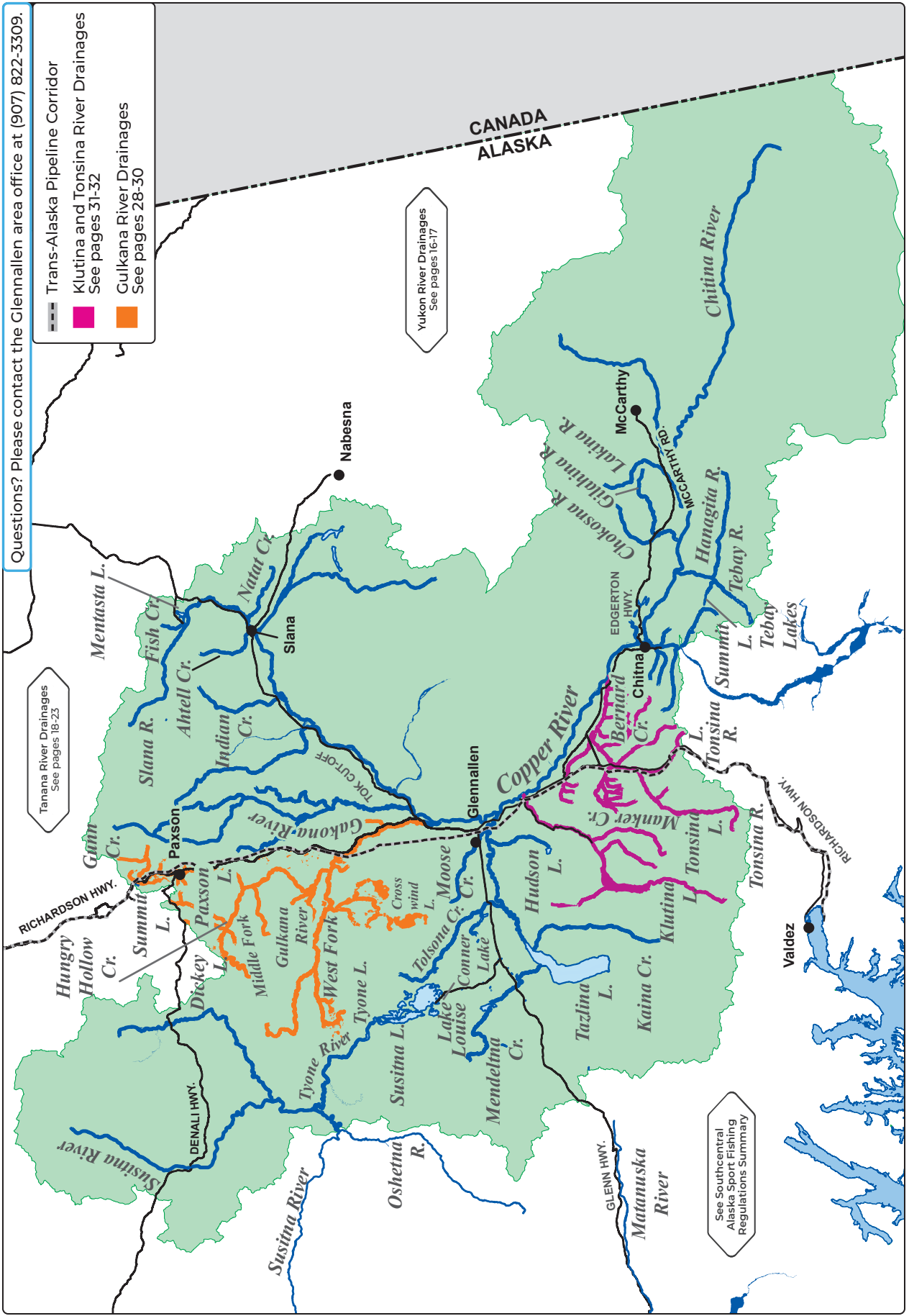


Questions? Please contact the Glennallen area office at (907) 822-3309.

-  Trans-Alaska Pipeline Corridor
-  Klutina and Tonsina River Drainages
See pages 31-32
-  Gulkana River Drainages
See pages 28-30



Tanana River Drainages
See pages 18-23

Yukon River Drainages
See pages 16-17

See Southcentral
Alaska Sport Fishing
Regulations Summary

GENERAL REGULATIONS - UPPER COPPER AND UPPER SUSITNA

Inclusive waters: All waters and tributaries of the Copper River upstream from a line between the south bank of Haley Creek and the south bank of Canyon Creek in Wood Canyon, and all waters and tributaries of the upper Susitna River drainage upstream from the confluence of the Oshetna River, but excluding the Oshetna River.

Fishing is open year-round for all species unless otherwise noted below or in special regulations.

Stay legal - before you cast, check emergency orders at www.adfg.alaska.gov/sf/EONR.

KING SALMON

NEW A king salmon permit is required, in addition to a king salmon stamp. This individual permit replaces the record of harvest typically recorded on your sport fishing license or harvest record card.

- Permits are free of cost and available online, through the ADF&G mobile app, ADF&G offices, and at some private vendors.
- Permits must be reported **ONLINE** by August 31, even if you did not harvest a king salmon.

- **January 1-July 19:** Open to king salmon fishing.
- **20 inches or longer:** 1 per day, 1 in possession.

NEW There is an annual limit of 4 king salmon. If you retain a king salmon 20 inches or longer, you must immediately record that harvest on your king salmon permit.

- **Less than 20 inches:** 10 per day, 10 in possession.
- If you intend to release a king salmon, you must NOT remove it from the water. A king salmon that is removed from the water must be retained and becomes part of the bag limit of the person who originally hooked it.
- Anyone who is engaged in freshwater sport fish guiding is allowed to sport fish in the Copper River or its tributaries while a client is present or within the guide's control or responsibility, but that guide may not retain a king salmon while guiding.

SOCKEYE SALMON

- **16 inches or longer:** 3 per day, 6 in possession.
- **Less than 16 inches:** 10 per day, 10 in possession.
- If you intend to release a sockeye salmon, you must NOT remove it from the water. A sockeye salmon that is removed from the water must be retained and becomes part of the bag limit of the person who originally hooked it.

COHO SALMON

- **16 inches or longer:** 3 per day, 3 in possession.
- **Less than 16 inches:** 10 per day, 10 in possession.
- If you intend to release a salmon, you must NOT remove it from the water. A salmon that is removed from the water must be retained and becomes part of the bag limit of the person who originally hooked it.

ARCTIC CHAR & DOLLY VARDEN (COMBO)

- 10 per day, 10 in possession, no size limits.

LAKE TROUT

- 2 per day, 2 in possession, no size limit.

ARCTIC GRAYLING

- 5 per day, 5 in possession, no size limit.

RAINBOW/STEELHEAD TROUT (COMBO)

- 2 per day, 2 in possession, only 1 of which may be 20 inches or longer.

BURBOT

- 5 per day, 5 in possession, no size limit.
- **Set lines may not be used in lakes and flowing waters of the Upper Copper/Upper Susitna River drainages, except for the waters of the Copper River drainage** as described on page 26.

STOCKED LAKES

- Arctic char/Dolly Varden, rainbow trout, and landlocked salmon: 10 per day, 10 in possession, in combination, only 1 of which may be 18 inches or longer. See pages 38-39.

OTHER FINFISH

- No limit.

METHODS AND MEANS - UPPER COPPER AND UPPER SUSITNA

BAIT AND GEAR RESTRICTIONS:

- **In flowing waters of the Upper Copper River drainage:** Only unbaited, single-hook, artificial lures or flies may be used, except as specified by special regulations in the Klutina, Gulkana, and Tonsina River drainages, mainstem Copper River, and Moose Creek (Tazlina River drainage).
- **In lakes and ponds of the Upper Copper River drainage:** Bait and treble hooks are allowed, except as specified in Paxson, Summit, and Crosswind lakes (Gulkana River drainage) special regulations.
- **In all waters of the Upper Susitna River drainage:** Bait and treble hooks are allowed, except as specified in Lake Louise, Susitna and Tyone lakes (Tyone River drainage) special regulations.

ICE HOUSES:

- All ice houses not removed from the ice at the end of a day's fishing must be registered and a permit obtained from ADF&G.
- Each registered ice house must have its permit number displayed on one side and on its roof in distinguishable numbers at least 12 inches high.
- Ice houses must be removed from all water bodies by April 30.

USE OF SPEAR OR BOW AND ARROW:

- **October 1-March 31:** Whitefish may be taken with a spear or bow and arrow.
- Suckers may be taken year-round with a spear or bow and arrow.

SPECIAL REGULATIONS - UPPER COPPER AND UPPER SUSITNA

CHITINA RIVER DRAINAGE:

- Open year-round to sport fishing for species other than king salmon.
- **July 1-August 10:** Open to king salmon fishing.

CHOKOSNA RIVER (Chitina River drainage):

- Open year-round to sport fishing for species other than king salmon.
- **Closed to king salmon fishing.** All king salmon caught must be released immediately.

...continued

COPPER RIVER DRAINAGE:

- Open year-round to sport fishing for species other than king salmon.
- **Downstream of the upstream bank of the Klutina River** (see specific regulations for *Klutina and Tonsina rivers* on page 32):
 - **July 1-August 10:** Open to king salmon fishing.
- **Mainstem only - downstream of the confluence of the Slana River:**
 - Bait and artificial lures or flies are allowed, including treble hooks.
- **Mainstem and flowing waters of east bank Copper River tributaries, and in flowing waters of west bank Copper River tributaries downstream of the Richardson Highway and Glenn Highway (Tok Cutoff), excluding the Gulkana River** (see pages 28-30):
 - Burbot may be taken with more than one line and hook, as specified on page 7 under "Sport Fishing Gear for Burbot."

CROSSWIND LAKE: See *Gulkana River Drainage special regulation #9* on page 30.

FISH CREEK (tributary to Mentasta Lake):

- **Closed to all salmon fishing.** All salmon caught must be released immediately.

GAKONA RIVER CLEARWATER TRIBUTARIES - including all flowing waters within ¼ mile radius of their confluence with the Gakona River:

- Open year-round to sport fishing for species other than king salmon.
- **Closed to king salmon fishing.** All king salmon caught must be released immediately.

GILAHINA RIVER (Chitina River drainage) - including all flowing waters within ¼ mile radius of its confluence with the Chitina River:

- Open year-round to sport fishing for species other than king salmon.
- **Closed to king salmon fishing.** All king salmon caught must be released immediately.

GULKANA RIVER: See pages 28-30.

HANAGITA RIVER DRAINAGE:

- Open year-round to sport fishing.
- **Rainbow/steelhead trout:** Catch-and-release fishing only. All rainbow/steelhead trout caught must be released immediately.

HUDSON LAKE:

- Open year-round to sport fishing.
- **Burbot:** 2 per day, 2 in possession, no size limit.

INDIAN CREEK (Copper River drainage) - including all flowing waters within ¼ mile radius of the confluence with the Copper River:

- Open year-round to sport fishing for species other than king salmon.
- **Closed to king salmon fishing.** All king salmon caught must be released immediately.

KAINA CREEK: See *Tazlina Lake Tributaries* on page 27.

KLUTINA RIVER DRAINAGE: See page 32.

LAKE LOUISE: See *Tyone River Drainage* on page 27.

LAKINA RIVER (Chitina River drainage) - including all flowing waters within ¼ mile radius of its confluence with the Chitina River:

- Open year-round to sport fishing for species other than king salmon.
- **Closed to king salmon fishing.** All king salmon caught must be released immediately.

MENDELTA CREEK DRAINAGE:

- Open year-round to sport fishing for species other than salmon.
- **All flowing waters, including all waters within ¼ mile of the Mendelta Creek confluence with Tazlina Lake:**
 - **Closed to all salmon fishing.** All salmon caught must be released immediately.
- **All lakes:**
 - Open year-round to sport fishing for species other than salmon.
 - **Closed to all salmon fishing.** All salmon caught must be released immediately.

MOOSE CREEK (Tazlina River drainage):

- Bait and artificial lures or flies are allowed year-round, including treble hooks (see "Methods and Means" on pages 6-7).

PAXSON LAKE: See *Gulkana River Drainage special regulation #2* on page 28.

SINONA CREEK - including all flowing waters within ¼ mile radius of its confluence with the Copper River:

- **Closed to king salmon fishing.** All king salmon caught must be released immediately.

SLANA RIVER DRAINAGE - including all flowing waters within ¼ mile radius of the confluence of the Slana and Copper rivers (including Ahtell and Natat creeks):

- Open year-round to sport fishing for species other than king salmon.
- **Closed to king salmon fishing.** All king salmon caught must be released immediately.
- **Whitefish:** May be taken year-round by a spear or bow and arrow.

...continued



Spencer Erjavec, burbot, Lake Louise

STOCKED LAKES (listed on pages 38-39):

- Open year-round to sport fishing.
- Bait and artificial lures or flies are allowed, including treble hooks.
- **Arctic char/Dolly Varden, rainbow trout, and landlocked salmon:** 10 per day, 10 in possession, in combination, only 1 of which may be 18 inches or longer.

SUMMIT LAKE (Mile 194 Richardson Highway): See *Gulkana River Drainage special regulation #1* on page 28.

SUMMIT LAKE AND BRIDGE CREEK (outlet stream of Summit Lake) - Tebay River drainage:

- Open year-round to sport fishing.
- **Rainbow/steelhead trout:** 10 per day, 10 in possession, only 1 of which may be 18 inches or longer.

SUSITNA LAKE: See *Tyone River Drainage* below.

SUSITNA RIVER DRAINAGE - upstream from the Oshetna River:

- **Closed to all salmon fishing.** All salmon caught must be released immediately.

TEBAY RIVER DRAINAGE - downstream from its confluence with the Hanagita River:

- Open year-round to sport fishing for species other than king salmon.
- **July 1-August 10:** Open to king salmon fishing.
- **Rainbow/steelhead trout:** Catch-and-release fishing only. All rainbow/steelhead trout caught must be released immediately.

TOLSONA LAKE:

- Open year-round to sport fishing.
- **Burbot:** 2 per day, 2 in possession, no size limit.

TONSINA RIVER DRAINAGE: See page 32.

TYONE LAKE: See *Tyone River Drainage* below.

TYONE RIVER DRAINAGE (see map on the right):

- Open year-round to sport fishing.
- **Lake Louise, Susitna Lake, and Tyone Lake:**
 - **May 16-October 31:** Only unbaited, single-hook, artificial lures or flies may be used.
 - **November 1-May 15:** Single hooks only, bait is allowed.
 - **Burbot:** 2 per day, 2 in possession, no size limit.
 - **Lake trout:** 1 per day, 1 in possession, no size limit.
- **All other lakes and flowing waters:**
 - **Burbot:** 2 per day, 2 in possession, no size limit.

TAZLINA LAKE TRIBUTARIES:

- **Closed to king salmon fishing.** All king salmon caught must be released immediately.
- **Kaina Creek** - within a ¼ mile radius of its mouth:
 - **Closed to king salmon fishing.** All king salmon caught must be released immediately.
- **Mendeltna Creek:**
 - See *Mendeltna Creek Drainage* on page 26.



Wyatt Haider, sockeye salmon, Klutina River

SPECIAL REGULATIONS - GULKANA RIVER DRAINAGE

Please refer to the maps on pages 29-30 for the colored sections and corresponding numbers. For any questions about the Gulkana River drainage, please contact the ADF&G Glennallen office at (907) 822-3309.

GULKANA RIVER DRAINAGE:

The following regulations apply to all waters of the Gulkana River drainage, unless otherwise specified in the colored sections on pages 29-30.

- **In flowing waters:** Only unbaited, single-hook, artificial lures or flies may be used year-round. See Gulkana River mainstem (sections 7 & 8) for exceptions.
- **In lakes and ponds:** Bait and treble hooks may be used year-round. See Summit and Paxson lakes (section 1 & 2) and Crosswind Lake (section 9) for exceptions.
- **In all waters: Set lines may not be used.**
- **Rainbow/steelhead trout:** Catch-and-release fishing only. All rainbow/steelhead trout caught must be released immediately.

GULKANA RIVER DRAINAGE - Upstream of Paxson Lake, including East Fork Gulkana, Summit Lake, and Gunn and Fish Creek drainages:

ALL WATERS:

- **Closed to all salmon fishing.** Salmon may not be targeted. All salmon caught incidentally must remain in the water and must be released immediately.
- **Arctic grayling:** 2 per day, 2 in possession, no size limit.
- **Lake trout:** 1 per day, 1 in possession, no size limit.

1

SUMMIT LAKE:

- **May 16-October 31:** Only unbaited, single-hook, artificial lures or flies may be used.
- **November 1-May 15:** Single hooks only; bait is allowed.

SUMMIT LAKE AND GUNN CREEK DRAINAGE:

- **Burbot:** 2 per day, 2 in possession, no size limit.

PAXSON LAKE

ALL WATERS:

- **Closed to all salmon fishing.** Salmon may not be targeted. All salmon caught incidentally must remain in the water and must be released immediately.
- **May 16-October 31:** Only unbaited, single-hook, artificial lures or flies may be used.
- **November 1-May 15:** Single hooks only; bait is allowed.
- **Lake trout:** 1 per day, 1 in possession, no size limit.

2

WATERS WITHIN A 100 YARD RADIUS OF THE MOUTH OF THE EAST FORK:

- **Arctic grayling:** 2 per day, 2 in possession, no size limit.

GULKANA RIVER - All flowing waters from 100 yards upstream from the narrows at the outlet of Paxson Lake, downstream to the confluence of the Middle Fork:

ALL WATERS:

- **Closed to all salmon fishing.** Salmon may not be targeted. All salmon caught incidentally must remain in the water and must be released immediately.

3

MIDDLE FORK - Waters of the Middle Fork of the Gulkana River, including Hungry Hollow Creek upstream of the outlet to Wait-A-Bit Lake:

ALL WATERS:

- **Closed to king salmon fishing.** King salmon may not be targeted. All king salmon caught incidentally must remain in the water and must be released immediately.

4

MIDDLE FORK, HUNGRY HOLLOW CREEK, AND TWELVE MILE CREEK - All waters of Twelvemile Creek, Hungry Hollow Creek downstream of the outlet of Wait-A-Bit Lake, and the Middle Fork of the Gulkana River from the outlet of Dickey Lake to an ADF&G marker three miles downstream:

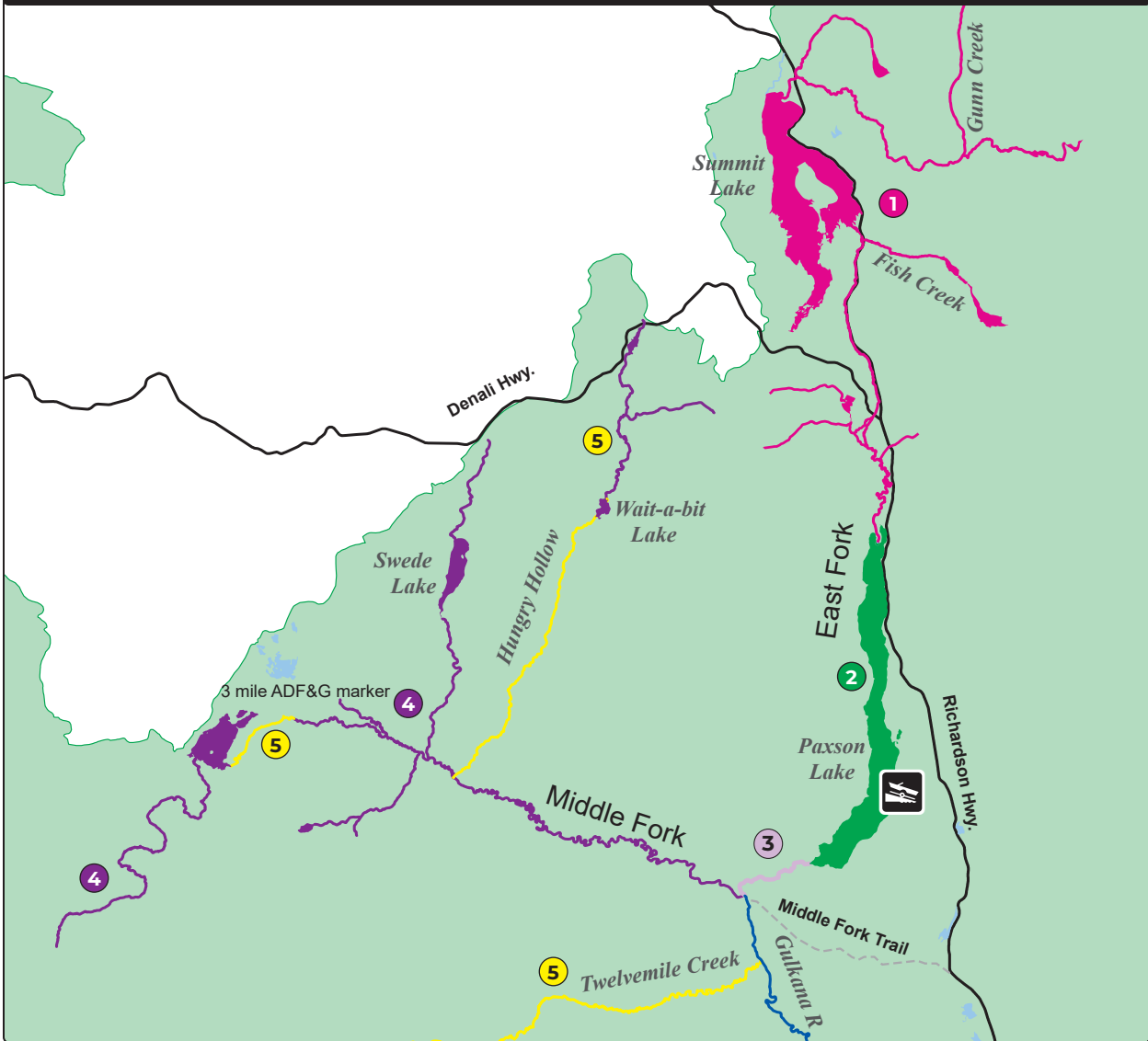
ALL WATERS:

- **Closed to king salmon fishing.** King salmon may not be targeted. All king salmon caught incidentally must remain in the water and must be released immediately.
- **April 15-June 14:** Closed to all salmon fishing.

5

...continued

UPPER GULKANA RIVER DRAINAGE



1 GULKANA RIVER DRAINAGE
Upstream of Paxson Lake, including East Fork Gulkana, Summit Lake, and Gunn and Fish Creek drainages.

2 PAXSON LAKE
All waters of Paxson Lake.

3 GULKANA RIVER
All flowing waters from 100 yards upstream from the narrows at the outlet of Paxson Lake, downstream to the confluence of the Middle Fork.

4 MIDDLE FORK
Waters of the Middle Fork of the Gulkana River, including Hungry Hollow Creek upstream of the outlet to Wait-A-Bit Lake:

5 MIDDLE FORK, HUNGRY HOLLOW CREEK, AND TWELVEMILE CREEK
All waters of Twelvemile Creek, Hungry Hollow Creek downstream of the outlet of Wait-A-Bit Lake, and the Middle Fork of the Gulkana River from the outlet of Dickey Lake to an ADF&G marker three miles downstream.

...continued

WEST FORK GULKANA RIVER - Flowing waters upstream from an ADF&G marker ½ mile upstream of the confluence of the West Fork and mainstem Gulkana:

- Sockeye salmon:
- **January 1-July 31:** 3 per day, 6 in possession.
- **August 1-December 31:** 6 per day, 6 in possession.

6

GULKANA RIVER MAINSTEM - Upstream of the upstream edge of the Richardson Highway Bridge to an ADF&G marker 7½ mile upstream of the West Fork confluence:

- **June 1-July 19:** Bait and artificial lures or flies are allowed, including treble hooks.
- **July 20-May 31:** Only unbaited, single-hook, artificial lures or flies may be used.

7

GULKANA RIVER MAINSTEM - Downstream of the upstream edge of the Richardson Highway Bridge to an ADF&G marker about 500 yards downstream of its confluence with the Copper River:

- **June 1-July 31:** Only unbaited, single-hook, artificial flies are allowed, with gap between point and shank ¾ inch or less. Additional weight may only be used 18 inches or more ahead of fly.
- A bead fished on the line above a bare hook is not an artificial fly.
- **August 1-May 31:** Only unbaited, single-hook, artificial lures may be used.

8

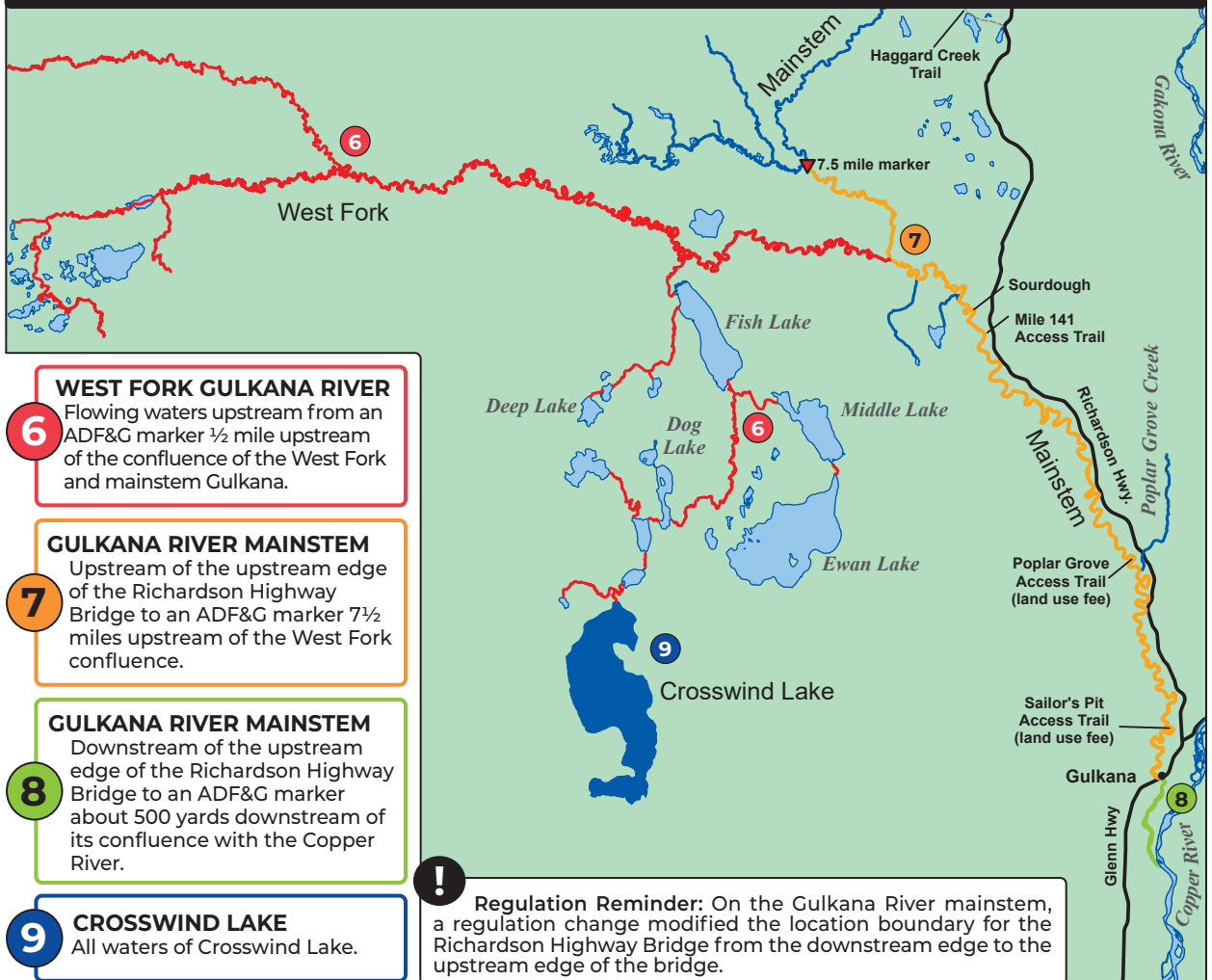
CROSSWIND LAKE - All waters of Crosswind Lake:

- **May 16-October 31:** Only unbaited, single-hook, artificial lures or flies may be used.
- **November 1-May 15:** Single hooks only; bait is allowed.
- **Lake trout:** 1 per day, 1 in possession, no size limit.

9

...continued

LOWER GULKANA RIVER DRAINAGE



6 WEST FORK GULKANA RIVER
Flowing waters upstream from an ADF&G marker ½ mile upstream of the confluence of the West Fork and mainstem Gulkana.

7 GULKANA RIVER MAINSTEM
Upstream of the upstream edge of the Richardson Highway Bridge to an ADF&G marker 7½ miles upstream of the West Fork confluence.

8 GULKANA RIVER MAINSTEM
Downstream of the upstream edge of the Richardson Highway Bridge to an ADF&G marker about 500 yards downstream of its confluence with the Copper River.

9 CROSSWIND LAKE
All waters of Crosswind Lake.

! Regulation Reminder: On the Gulkana River mainstem, a regulation change modified the location boundary for the Richardson Highway Bridge from the downstream edge to the upstream edge of the bridge.

KLUTINA AND TONSINA RIVER DRAINAGES

! All other waters (not highlighted) within the Klutina and Tonsina River drainages are closed to king salmon fishing.

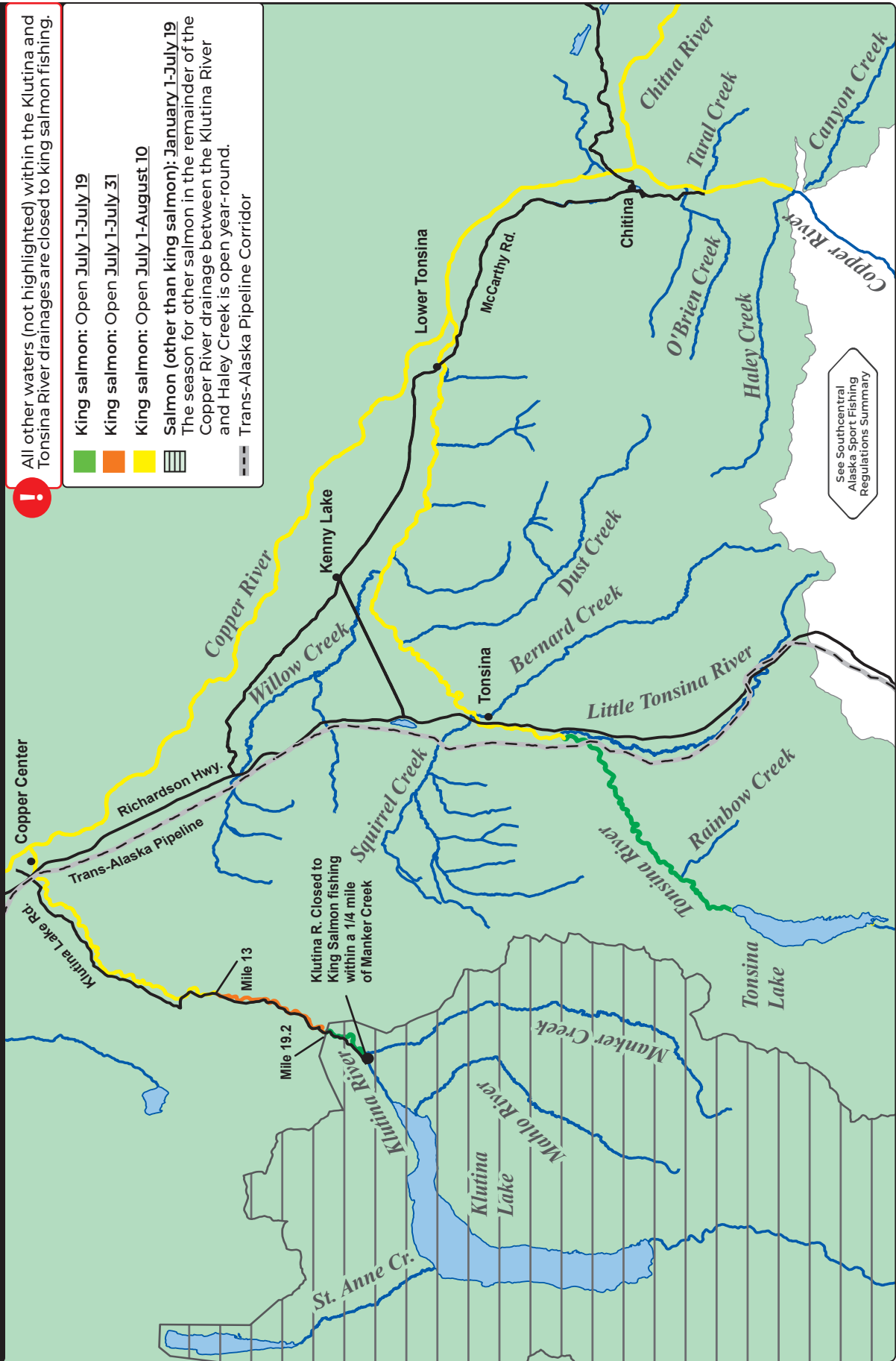
King salmon: Open July 1-July 19

King salmon: Open July 1-July 31

King salmon: Open July 1-August 10

Salmon (other than king salmon): January 1-July 19
 The season for other salmon in the remainder of the Copper River drainage between the Klutina River and Haley Creek is open year-round.

Trans-Alaska Pipeline Corridor



See Southeastern Alaska Sport Fishing Regulations Summary

KLUTINA RIVER DRAINAGE:

- Bait and artificial lures or flies are allowed year-round, including treble hooks. See "Methods and Means" on pages 6-7.
- **All flowing waters upstream of ADF&G marker at Mile 19.2 Klutina Lake Road to Klutina Lake:**
 - **January 1-July 19:** Open to sport fishing for salmon other than king salmon.
 - **July 1-July 19:** Open to king salmon fishing.
- **All flowing waters downstream of the ADF&G marker at Mile 19.2 Klutina Lake Road, to the ADF&G marker at Mile 13.0 Klutina Lake Road:**
 - **July 1-July 31:** Open to king salmon fishing.
- **All flowing waters downstream of ADF&G marker at Mile 13.0 Klutina Lake Road:**
 - **July 1-August 10:** Open to king salmon fishing.
- **Klutina Lake - including all flowing waters entering Klutina Lake:**
 - Open year-round to sport fishing for species other than salmon.
 - **Closed to king salmon fishing.** All king salmon caught must be released immediately.
 - **January 1-July 19:** Open to sport fishing for salmon other than king salmon.
- **Manker Creek - including all flowing waters within ¼ mile radius of its confluence with the Klutina River:**
 - Open year-round to sport fishing for species other than salmon.
 - **Closed to king salmon fishing.** All king salmon caught must be released immediately.
 - **January 1-July 19:** Open to sport fishing for salmon other than king salmon.
- **All other lakes in the Klutina River drainage:**
 - Open year-round to sport fishing for species other than salmon.
 - **January 1-July 19:** Open to sport fishing for salmon other than king salmon.



Ridge Demers, lake trout, Tangle Lakes

**GET THE LATEST FISHING INFO EMAILED TO YOU.
SIGN UP ONLINE AT WWW.WEFISHAK.ALASKA.GOV**

FISHING REPORTS ADVISORY ANNOUNCEMENTS EMERGENCY ORDERS

TONSINA RIVER DRAINAGE:

- Open year-round to sport fishing for species other than king salmon.
- **In the flowing waters of the Tonsina River drainage upstream of Tonsina Lake:**
 - Only unbaited, single-hook, artificial lures or flies may be used year-round.
- **In the flowing waters of the Tonsina River drainage downstream from the outlet of Tonsina Lake:**
 - Bait and artificial lures or flies are allowed year-round, including treble hooks.
- **All flowing waters downstream of Tonsina Lake to the downstream edge of the Alyeska Pipeline access bridge:**
 - **July 1-July 19:** Open to king salmon fishing.
- **All flowing waters downstream of the downstream edge of the Alyeska Pipeline access bridge:**
 - **July 1-August 10:** Open to king salmon fishing.
- **All tributaries of the Tonsina River, including the Little Tonsina River and Bernard Creek, and all flowing waters within a ¼ mile radius of their confluence with the Tonsina River:**
 - Open year-round to sport fishing for species other than king salmon.
 - **Closed to king salmon fishing.** All king salmon caught must be released immediately.
- **Tonsina Lake - including all flowing waters entering Tonsina Lake:**
 - Open year-round to sport fishing for species other than king salmon.
 - **Closed to king salmon fishing.** All king salmon caught must be released immediately.



Kinsley Gavlick, sockeye salmon, Klutina River