

Southeast Alaska/Yakutat Commercial Groundfish Fisheries

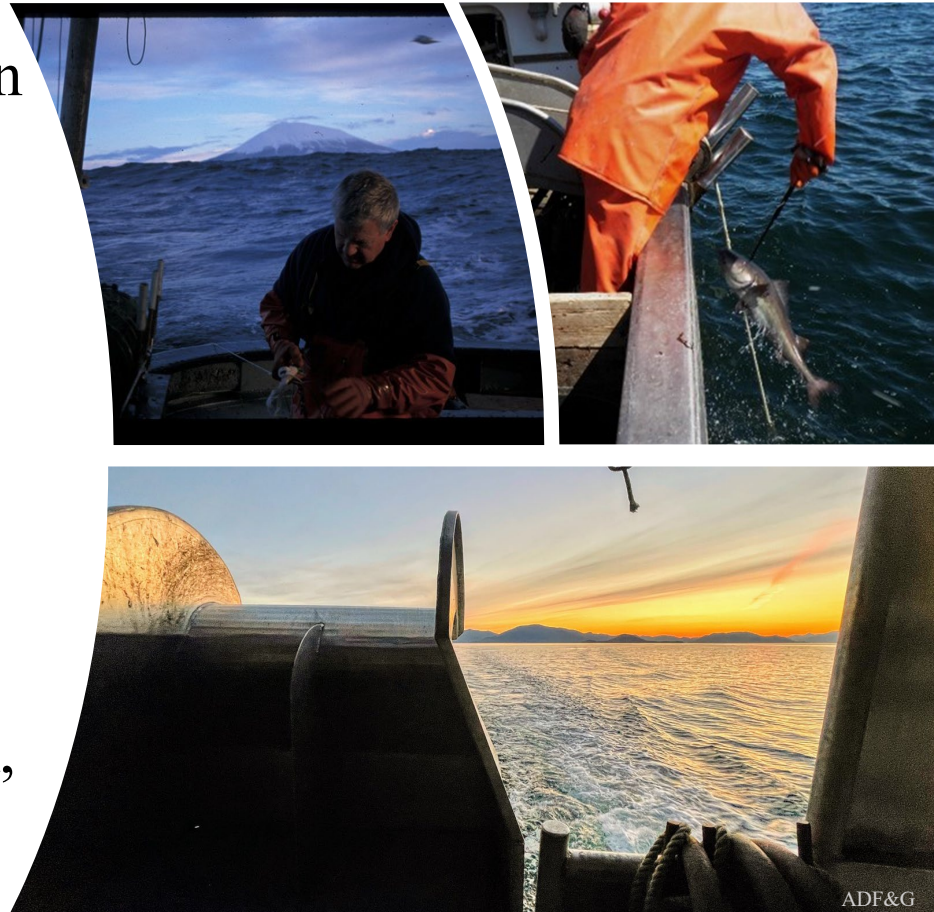
Alaska Board of Fisheries
March 10–22, 2022 Anchorage, Alaska
RC 3 – Tab 22

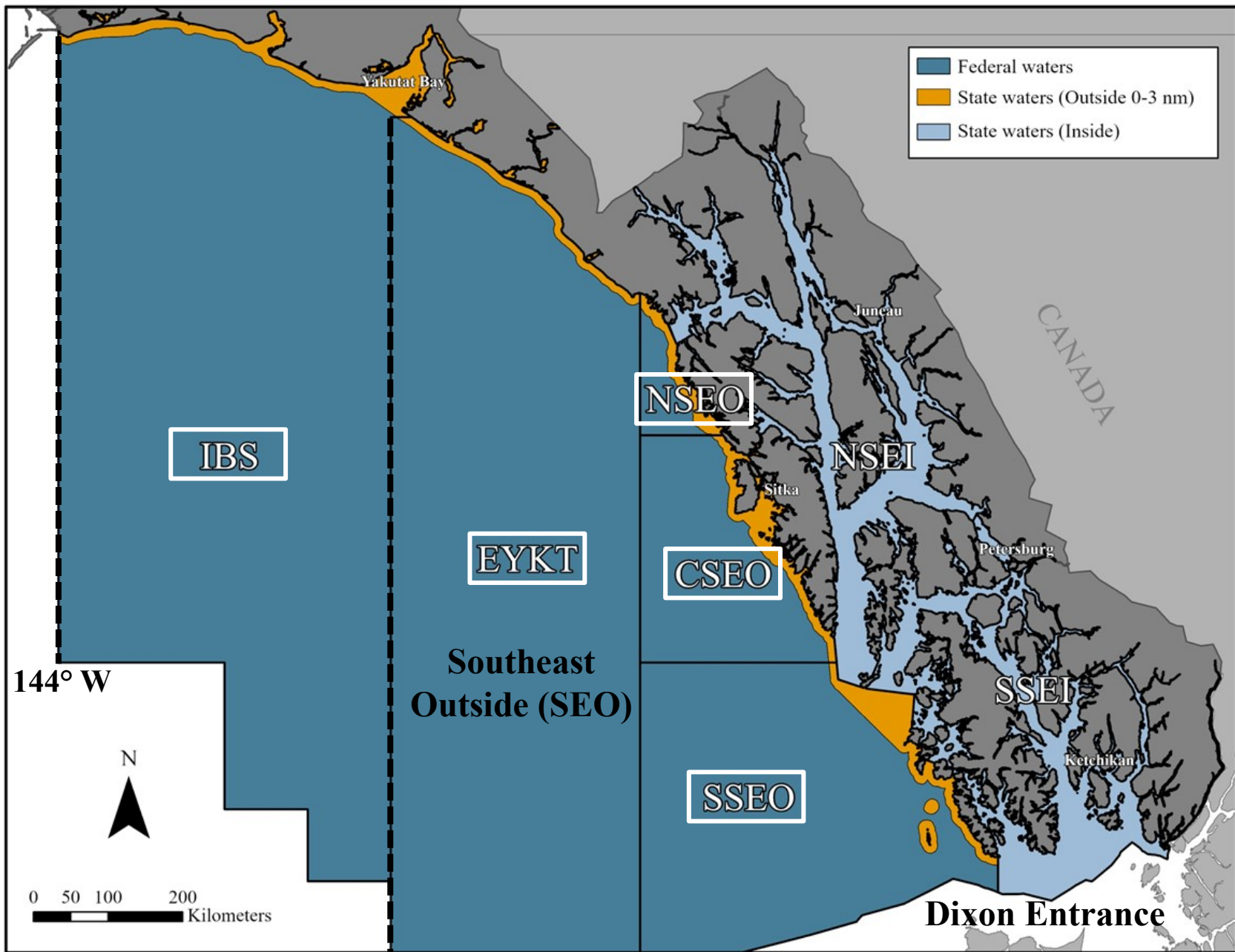


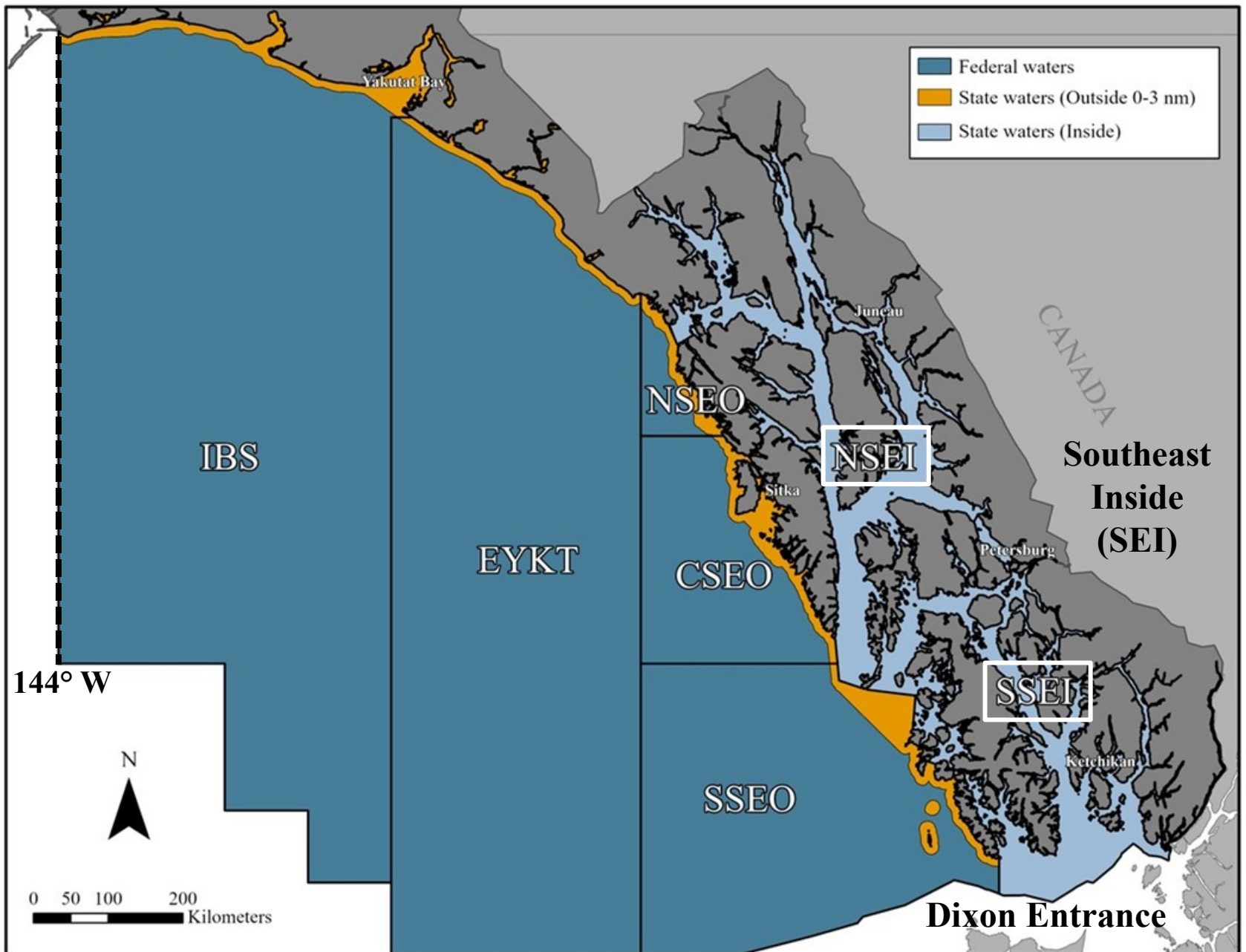
Rhea Ehresmann
Groundfish Project Leader
Division of Commercial Fisheries

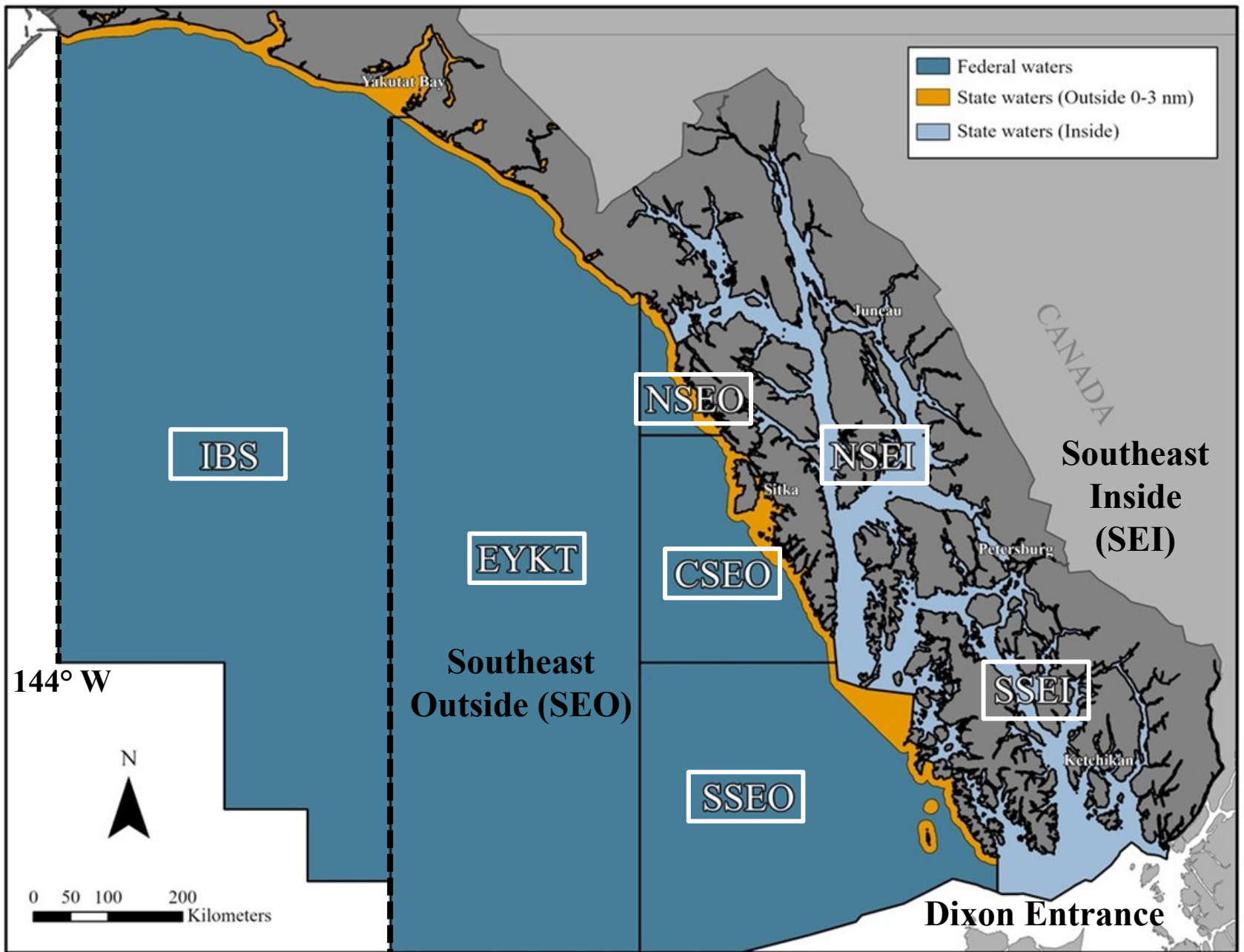
Groundfish fisheries in Southeast/Yakutat

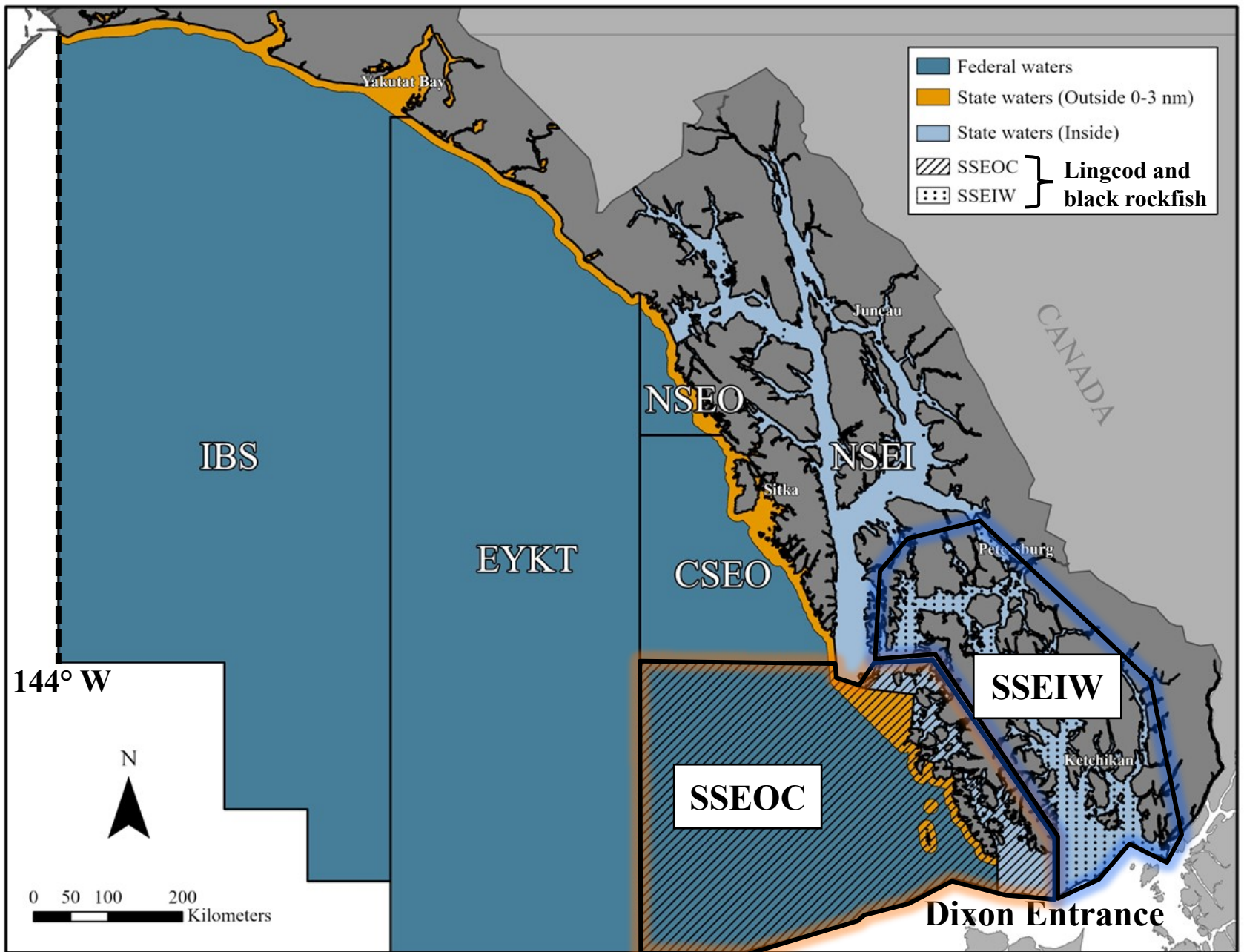
- The department has management authority over groundfish caught in commercial directed and bycatch fisheries in state waters:
 - Lingcod
 - Sablefish
 - Pacific cod
 - Demersal shelf rockfish (DSR)
 - Black rockfish
 - Other groundfish (hagfish, flatfish, spiny dogfish, skates, etc.)
- Also responsible for lingcod, DSR, and black/blue/dark rockfish in federal waters











Lingcod



Fishery

- Season closed December 1– May 15 to protect nest-guarding males
- Registration and logbooks required for directed fishery
- Legal directed fishery gear: dinglebar, hand troll, and mechanical jig
- Legal size: 27 inches from snout to tail or 20.5 inches from front of dorsal fin to tip of tail





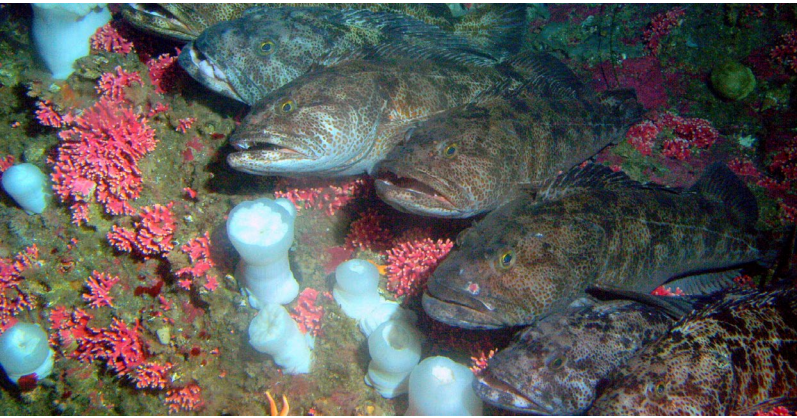
Lingcod

Stock assessment

- No assessment available
- Collect biological data

Management plan

- Revised in 2000
- Guideline Harvest Range (GHR; currently managed to upper end)
- Quota allocation among users in each area: directed, salmon troll bycatch, longline bycatch, jig bycatch, and sport



Lingcod



RC 2 Table 217-1

Lingcod Allocations (round pound) by Fishery and Management Area

Area	IBS	EYKT	NSEO	CSEO	SSEOC	NSEI	SSEIW
GHL	100,000	225,000	40,000	240,000	167,000	32,000	52,000
Commercial directed fishery	46,000	111,000	17,200	86,400	50,100	0	0
Commercial longline bycatch	12,670	94,000	10,800	55,200	28,390	9,600	2,080
Commercial salmon troll bycatch	8,000	16,000	3,200	16,800	3,340	6,400	2,080
Commercial groundfish jig bycatch*	0	0	0	9,600	11,690	0	0
Sport fishery	33,330	4,000	8,800	72,000	73,480	16,000	47,840

*Groundfish jig bycatch fishery limited to mechanical jigging machines and hand troll gear.

Proposal 217: reallocate 5% of lingcod guideline harvest level (GHL) from groundfish jig bycatch to salmon troll bycatch fisheries in SSEOC

Lingcod



RC 2 Table 217-2

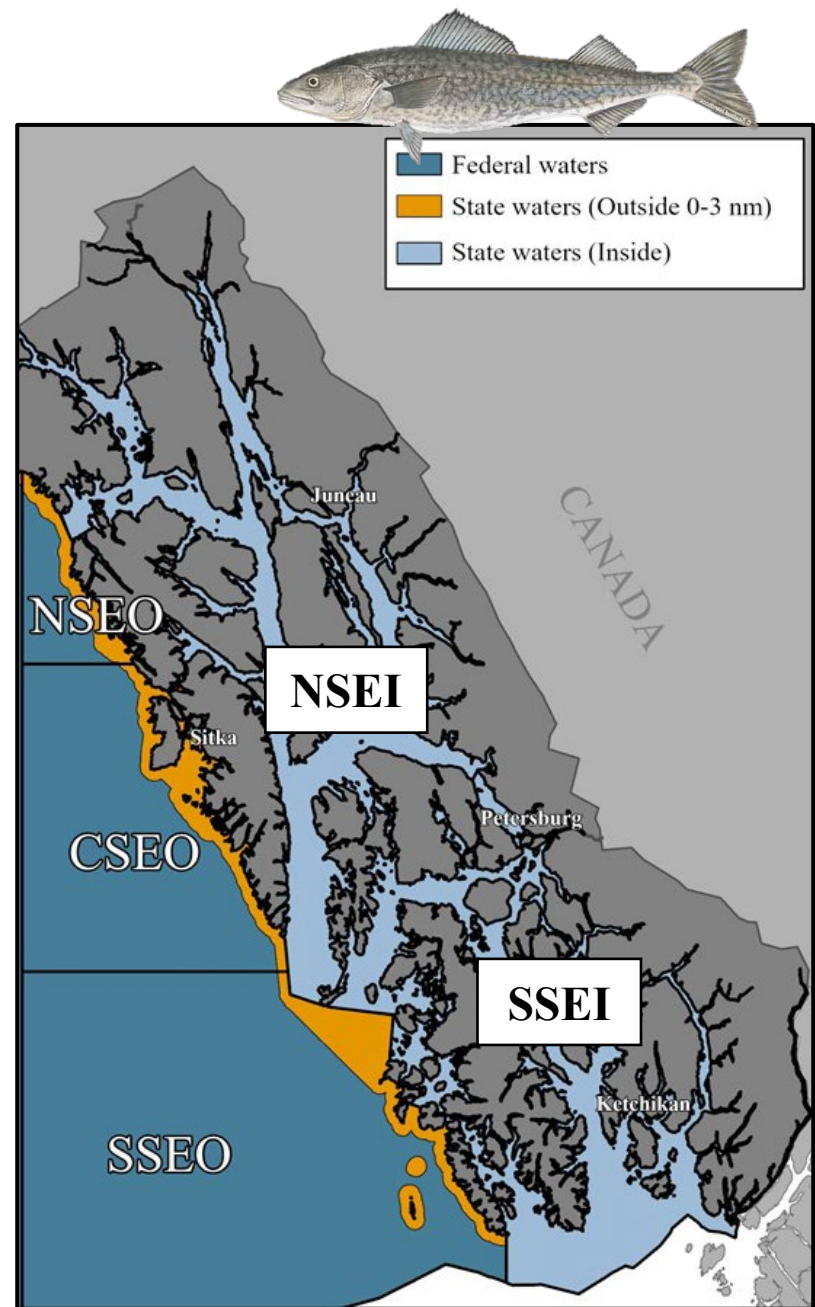
Year	Directed fishery		Longline bycatch		Troll bycatch		Jig bycatch	
	Harvest (rnd lbs)	Percent of allocation	Harvest (rnd lbs)	Percent of allocation	Harvest (rnd lbs)	Percent of allocation	Harvest (rnd lbs)	Percent of allocation
2001	6,966	14%	24,756	87%	1,095	33%	0	0%
2002	10,261	20%	26,475	93%	684	20%	0	0%
2003	48,762	97%	25,930	91%	3,106	93%	0	0%
2004	*	*	24,515	86%	3,561	107%	0	0%
2005	0	0%	12,707	45%	2,383	71%	0	0%
2006	16,646	33%	15,774	56%	3,877	116%	0	0%
2007	*	*	15,236	54%	3,383	101%	0	0%
2008	*	*	20,864	73%	1,677	50%	0	0%
2009	*	*	18,710	66%	4,677	140%	0	0%
2010	14,189	28%	29,934	105%	2,586	77%	0	0%
2011	*	*	13,103	46%	4,044	121%	0	0%
2012	2,778	6%	10,138	36%	3,439	103%	0	0%
2013	4,813	10%	25,878	91%	3,013	90%	*	*
2014	0	0%	14,081	50%	986	30%	0	0%
2015	8,105	16%	6,867	24%	3,735	112%	0	0%
2016	*	*	13,085	46%	5,054	151%	*	*
2017	22,602	45%	15,099	53%	3,447	103%	0	0%
2018	31,167	62%	25,820	91%	2,937	88%	0	0%
2019	53,490	107%	25,857	91%	2,766	83%	0	0%
2020	53,566	107%	9,734	34%	2,342	70%	0	0%

* Confidential harvest omitted

Sablefish

Two state-managed sablefish fisheries:

- Northern Southeast Inside (NSEI) Subdistrict – “Chatham Strait”
- Southern Southeast Inside (SSEI) Subdistrict – “Clarence Strait”

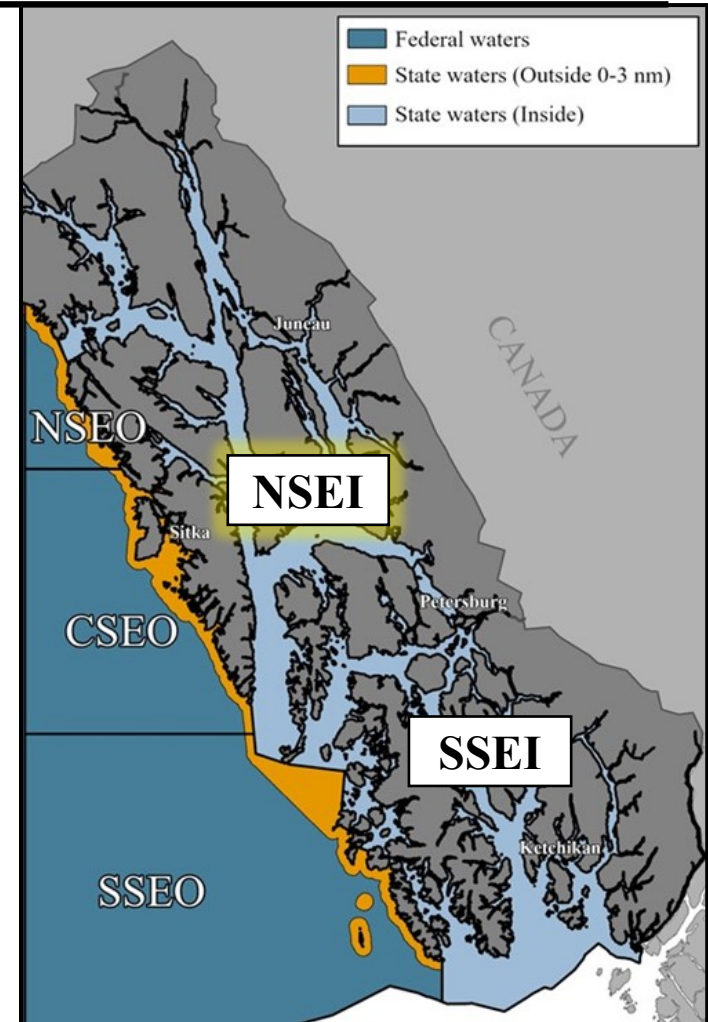




Sablefish – NSEI Chatham Strait

Fishery

- Registration and logbooks
- Longline gear only
- Season August 15–November 15

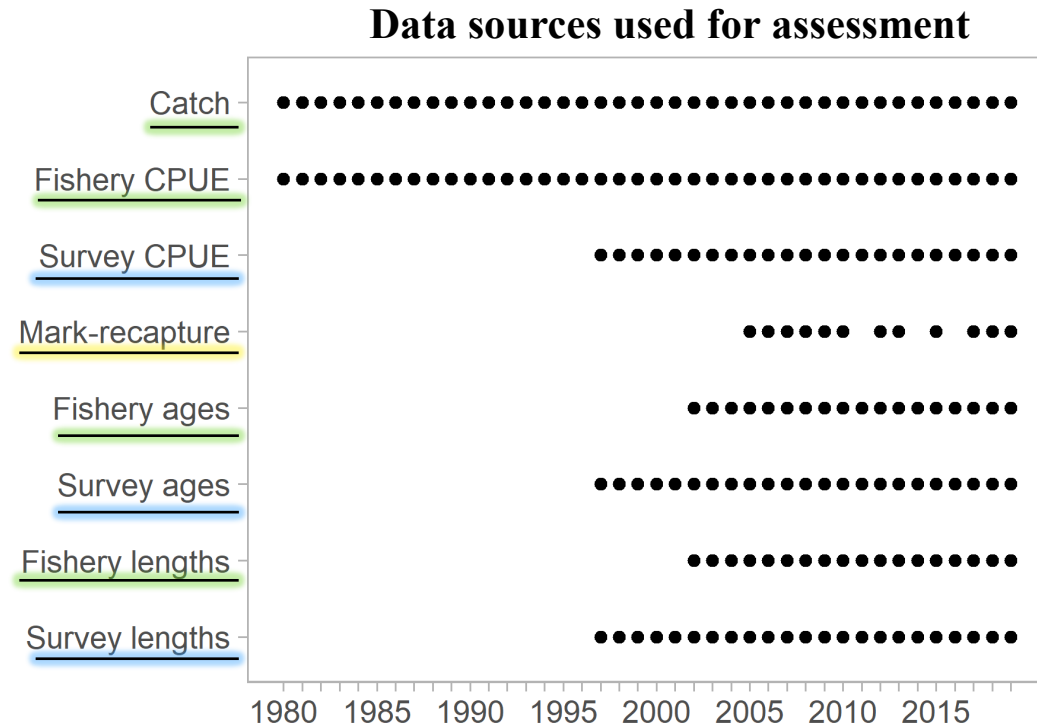




Sablefish – NSEI Chatham Strait

Stock assessment = catch-at-age model

- Mark-recapture study to estimate abundance (tagging occurs before fishery)
- Longline survey catch per unit effort (CPUE) and biological data (also occurs before fishery)
- Fishery catch, CPUE, and biological data

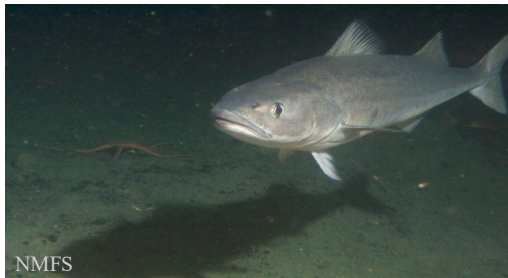




Sablefish – NSEI Chatham Strait

Management plan

- Acceptable biological catch (ABC) from statistical catch-at-age model
- Commercial directed quota set after deducting estimated sablefish mortality from ABC
- Annual harvest objective (AHO) divided among permit holders (73 in 2021)

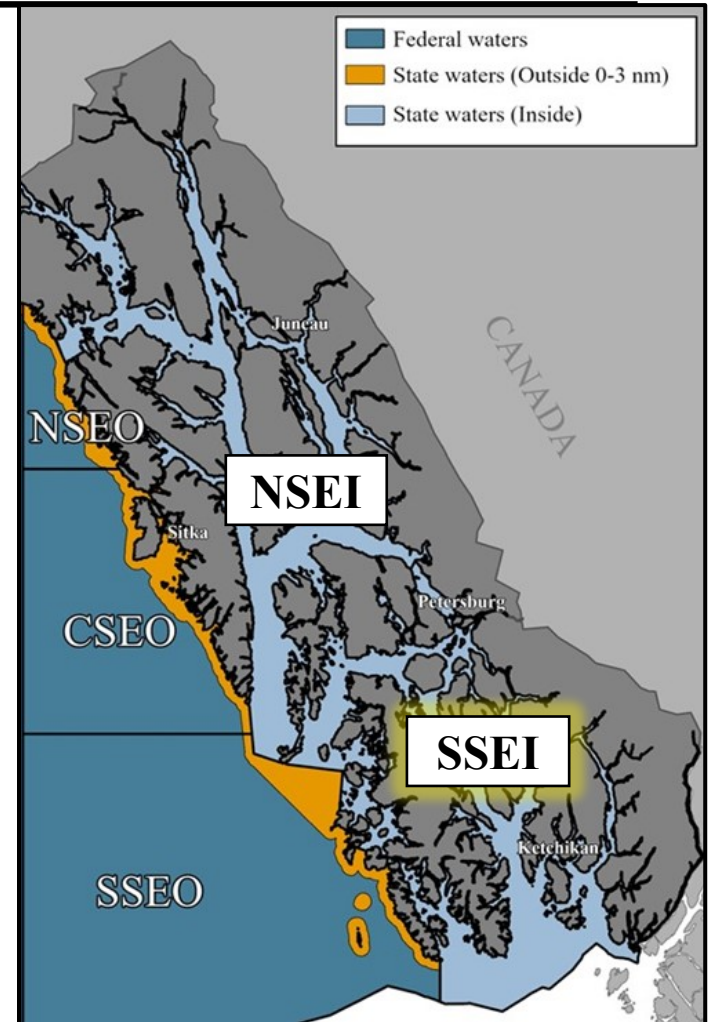




Sablefish – SSEI Clarence Strait

Fishery

- Registration and logbooks
- Longline gear and pot gear
- Season is June 1–November 15





Sablefish – SSEI Clarence Strait

No formal stock assessment

- Longline survey CPUE and biological data (also occurs before fishery)
- Fishery CPUE and biological data

Management plan

- Review survey and fishery CPUE and biological data
- AHO divided among permit holders (22 in 2021)





Sablefish fisheries

	NSEI – Chatham Strait	SSEI – Clarence Strait
Survey dates	Tagging survey: May Longline survey: late July–early August	Longline survey: May
Fishery dates	August 15–November 15	June 1–November 15
Allowable gear	Longline only (C61A)	Pot (C91C) and Longline/pot (C61C)
# Permit holders	73 in 2021	22 in 2021



Sablefish fisheries

Proposal 215: lengthen both NSEI and SSEI fisheries to open coinciding with the federal Individual Fishing Quota (IFQ) sablefish fishery (early to mid-March) and closes November 15

	Jan	Feb	Mar	Apr	May	Jun	Jul	Aug	Sep	Oct	Nov	Dec
NSEI Chatham survey												
NSEI Chatham fishery			←									
SSEI Clarence survey												
SSEI Clarence fishery			←									
Sablefish spawning												



Sablefish fisheries

Proposal 215: lengthen both NSEI and SSEI fisheries to open coinciding with the federal Individual Fishing Quota (IFQ) sablefish fishery (early to mid-March) and closes November 15

Proposal 216: extend the SSEI pot fishery by one month, from November 15 to December 15

	Jan	Feb	Mar	Apr	May	Jun	Jul	Aug	Sep	Oct	Nov	Dec
NSEI Chatham survey												
NSEI Chatham fishery												
SSEI Clarence survey												
SSEI Clarence fishery												
Sablefish spawning												



Sablefish fisheries

Proposal 220: allow longlined pot gear as a lawful gear type for NSEI



Codcoil or "Slinky" pot

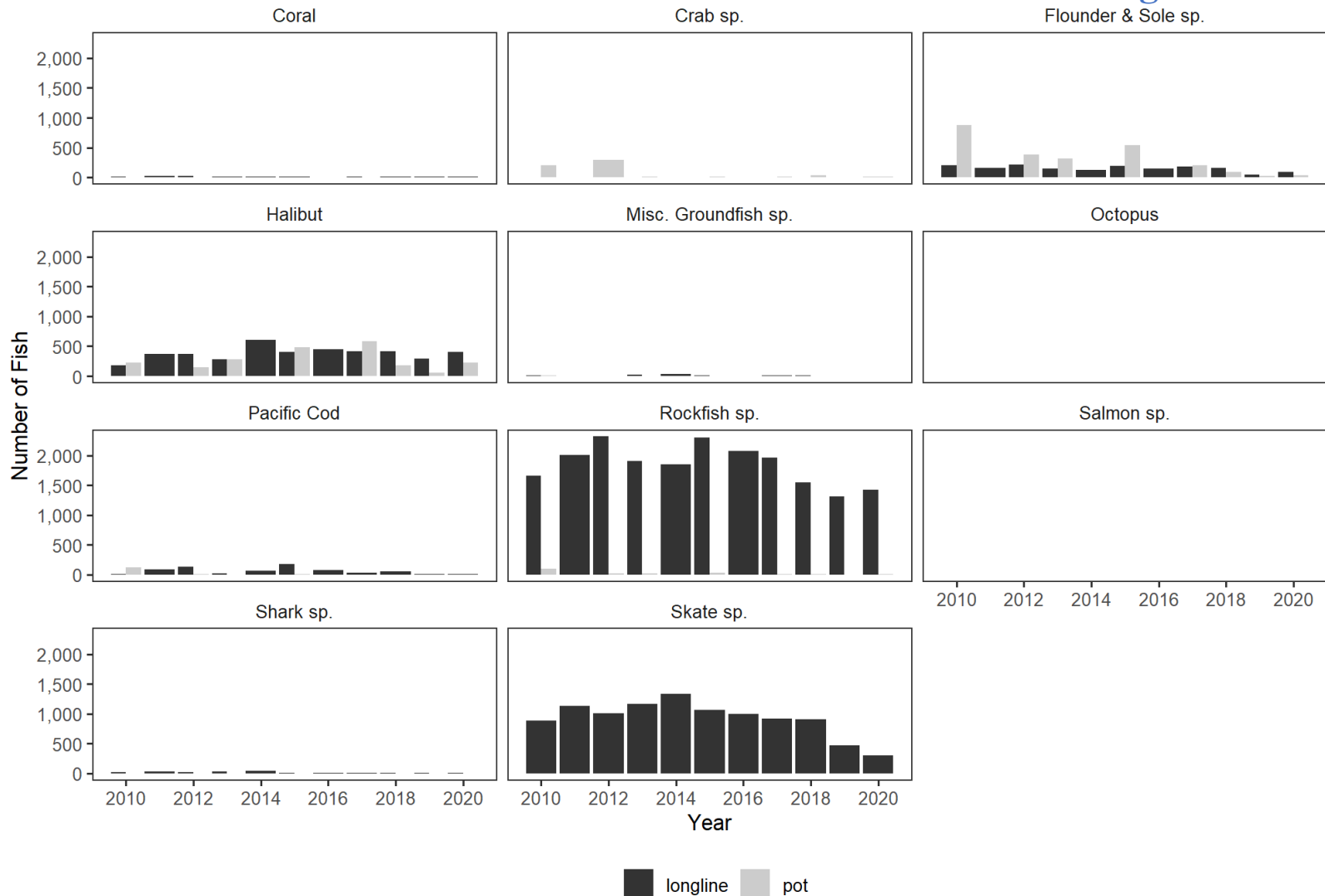


Traditional cod pot

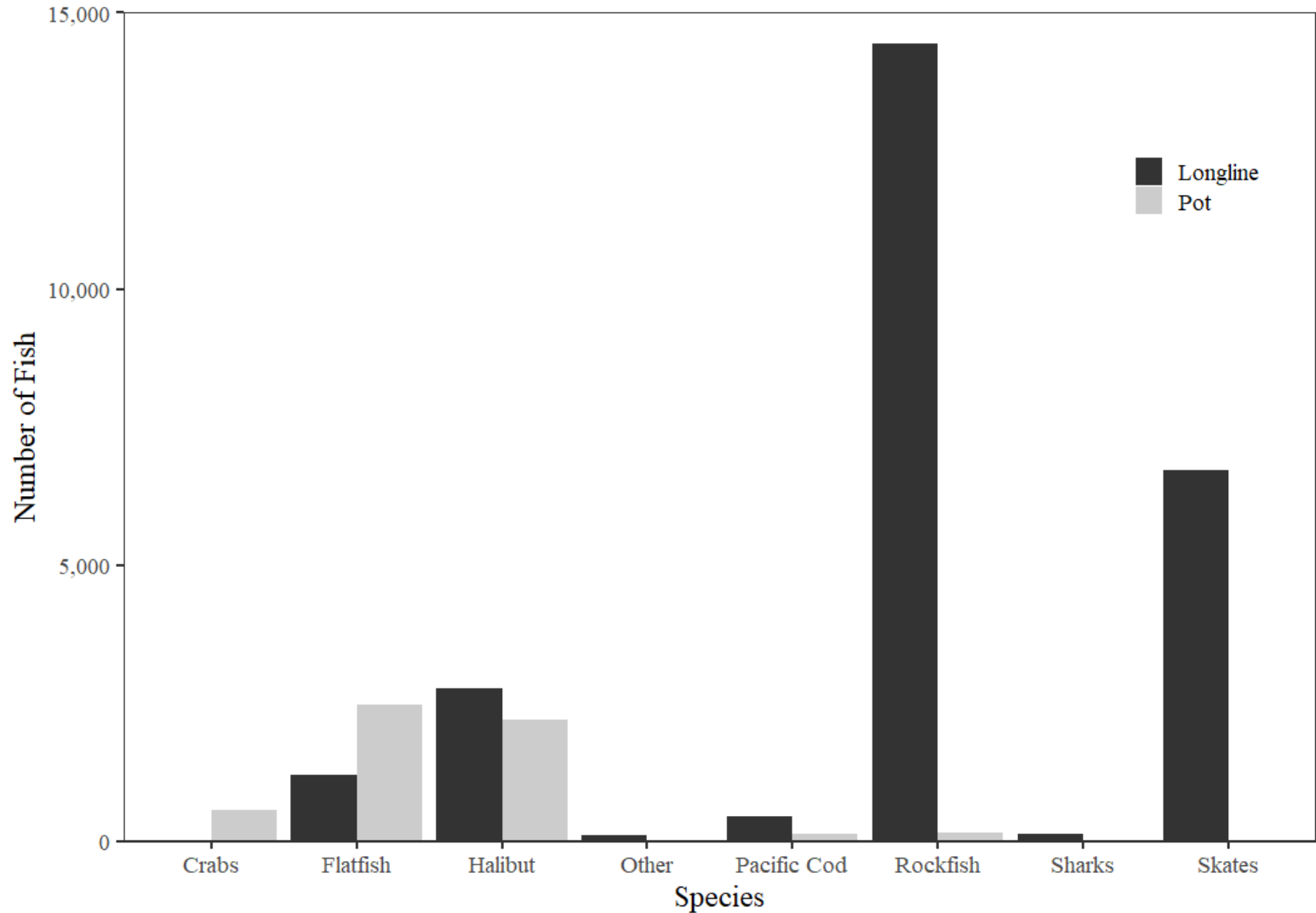
Sablefish fisheries



RC 2 Figure 220-2



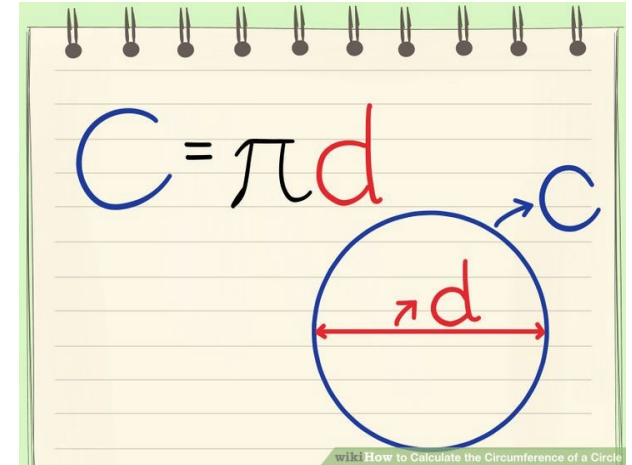
Sablefish fisheries



Sablefish fisheries



Sablefish fisheries



If fish diameter \geq escape ring diameter,
it's retained in the pot

Larger escape ring = more fish escaping



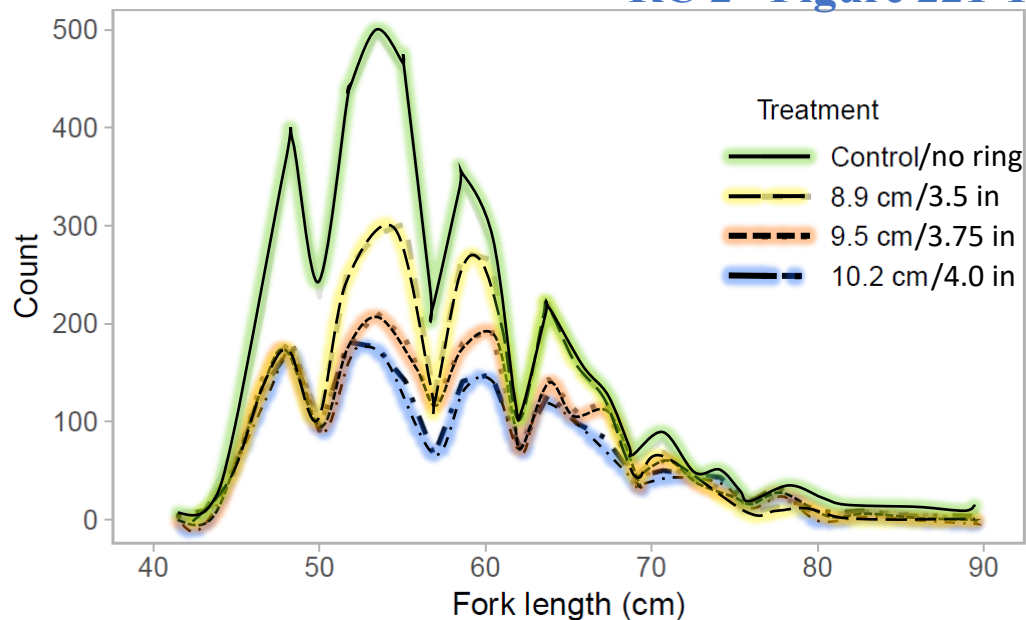


Sablefish fisheries

Proposal 221: reduce minimum inside diameter of circular escape rings from 4.0 inches to 3.75 inches

Proposal 223: clarify gear specifications of subsistence and personal use sablefish pots (at least two escape rings with minimum inside diameter of 3.75 inches and tunnel eye openings)

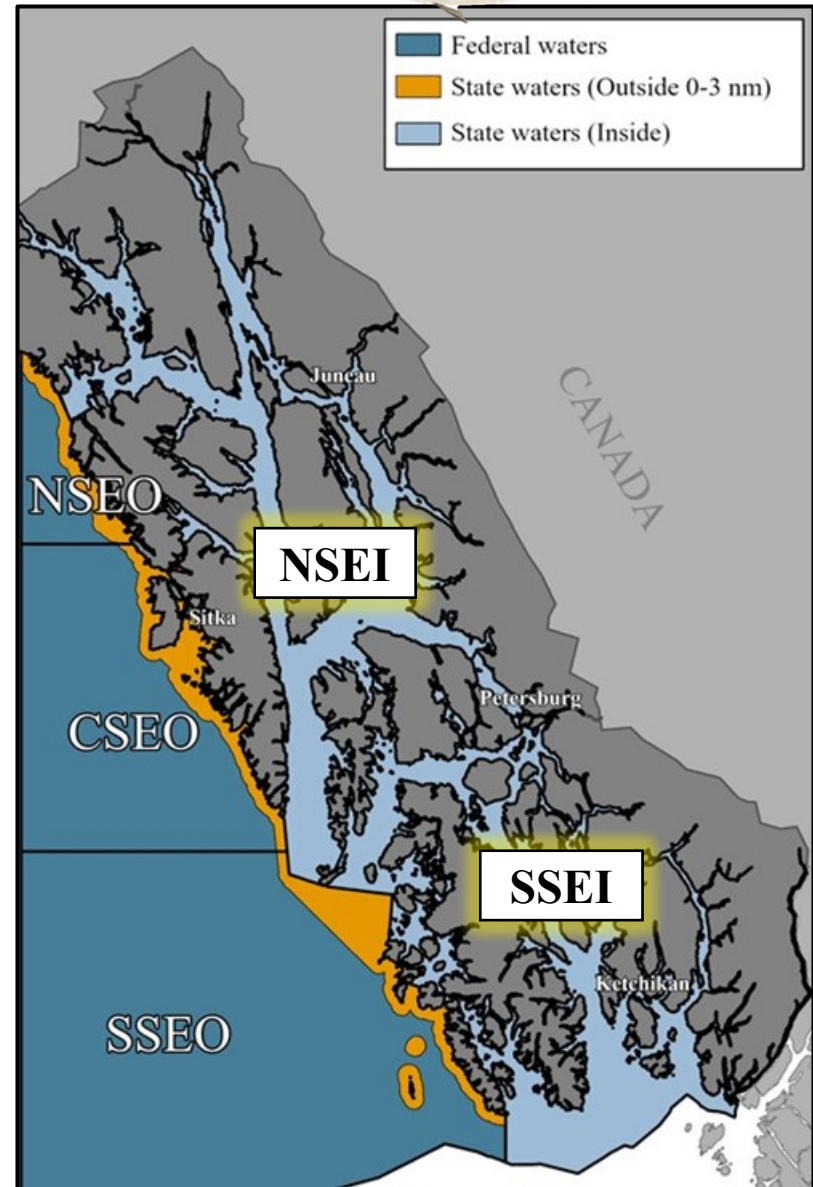
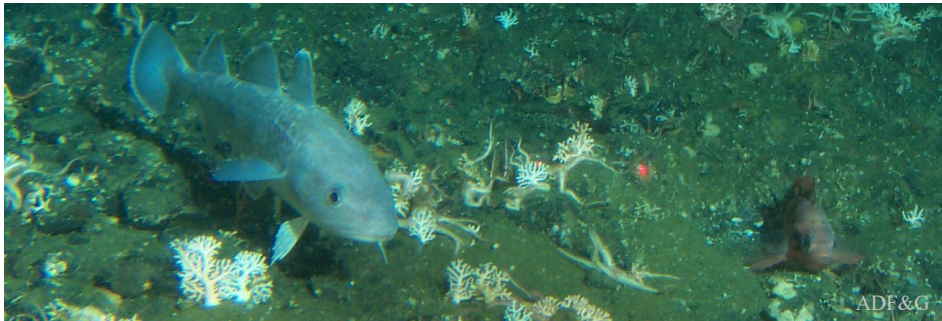
RC 2 Figure 221-1



Pacific cod

Fishery

- No registration
- Logbooks are required
- Longline, jig, and pot gear
- Open January 1–December 31, unless closed by EO



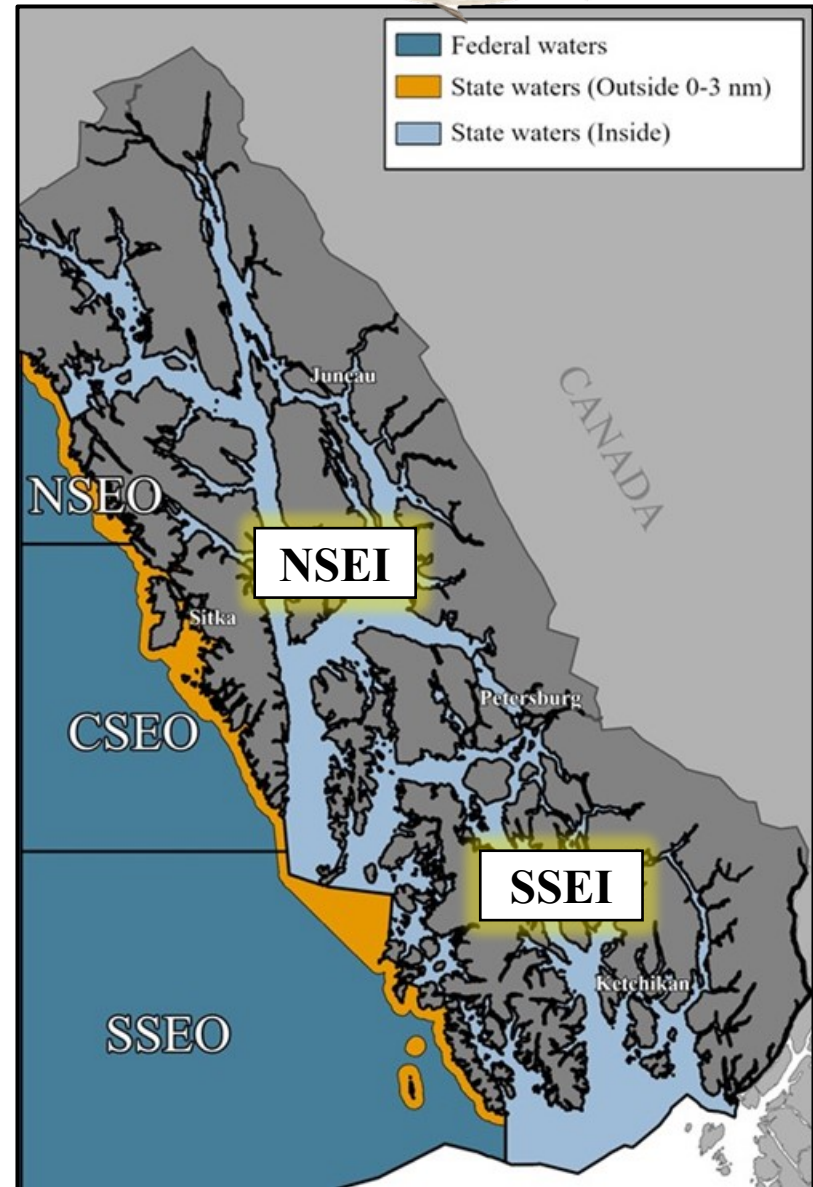
Pacific cod

Stock assessment

- No assessment available

Management plan

- Fishery CPUE and biological data
- GHR is 750,000–1,250,000 round lbs
- Managed by geographic subregion





Pacific cod

Proposal 218: require registration prior to fishing in the directed Pacific cod fishery

Fishery	Registration	Logbooks
Black rockfish	✓	✓
Demersal shelf rockfish	✓	✓
Lingcod	✓	✓
NSEI Sablefish	✓	✓
SSEI Sablefish	✓	✓
Pacific cod	✗	✓

Rockfish

DSR Fishery

- Directed fishery closed since January 2020 in all waters

Stock assessment and management

- Outside waters: joint state/federal management, assessment from ROV data
- Inside waters: state managed, no fishery-independent assessment
- Collect biological data



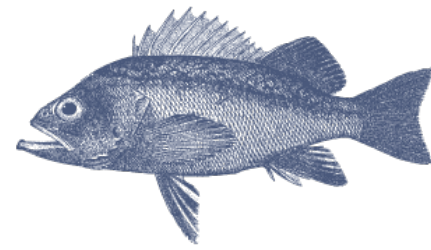
Demersal shelf rockfish (DSR)



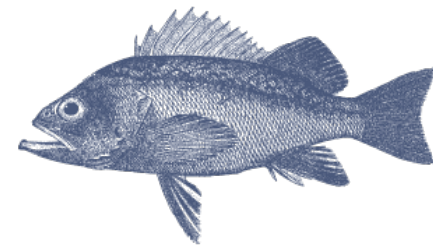
Rockfish

Black rockfish fishery

- Open year round in outside waters
- No assessment
- Collect biological data



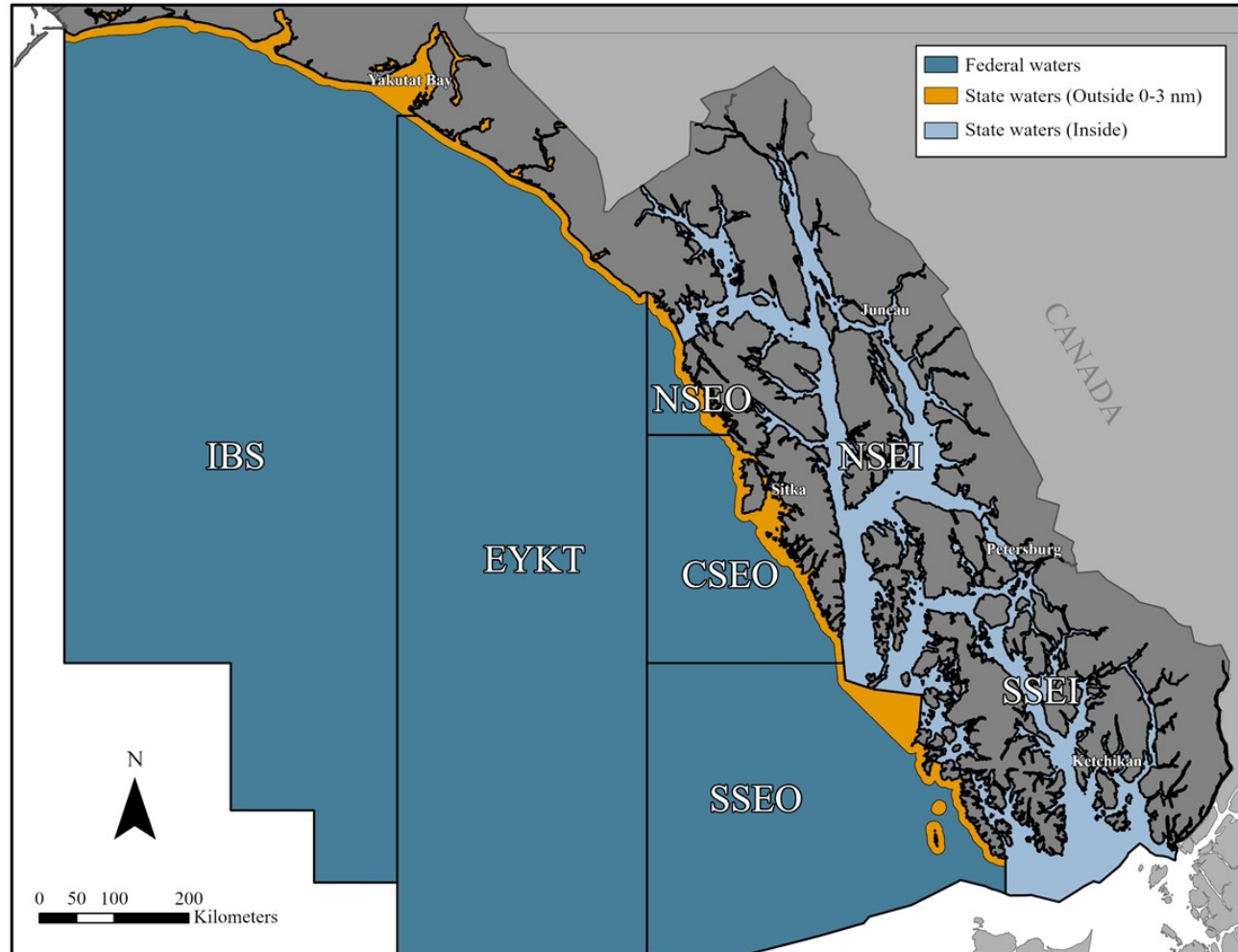
ADF&G



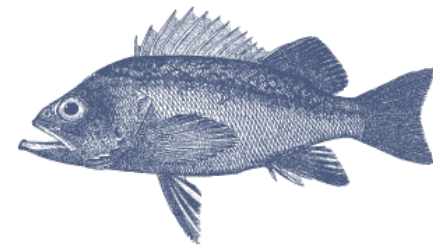
Rockfish

Bycatch fisheries

- State retention regulations vary by area, gear, species
- Federal retention regulations (full-retention) apply to all rockfish species

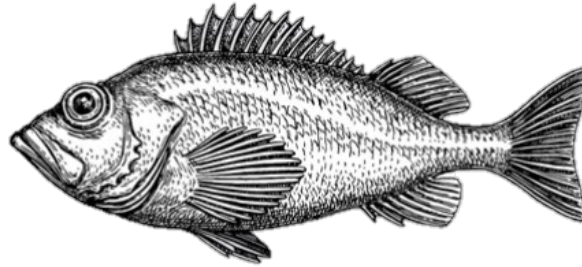


Rockfish



Terminology

- “Rockfish” – includes all rockfish of the *Sebastes* genus



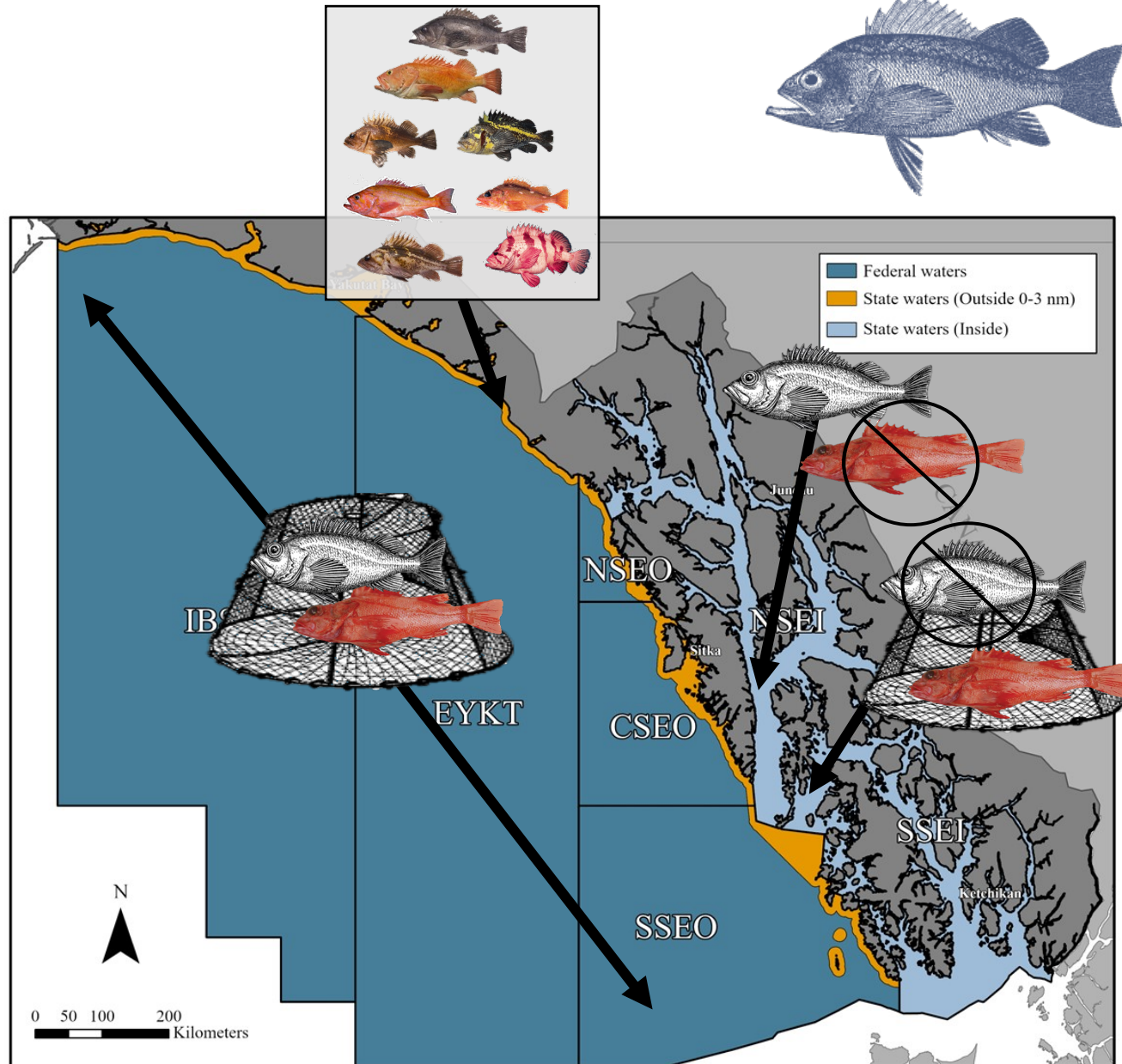
- “Thornyhead” – includes only thornyhead rockfish of the *Sebastolobus* genus

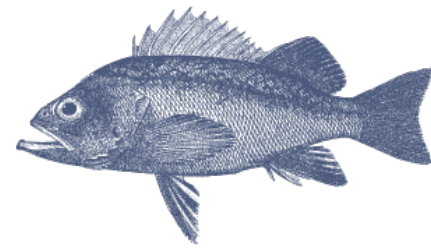


Rockfish

Bycatch fisheries

- State retention regulations vary by area, gear, species
- Federal retention regulations (full-retention) apply to all rockfish species

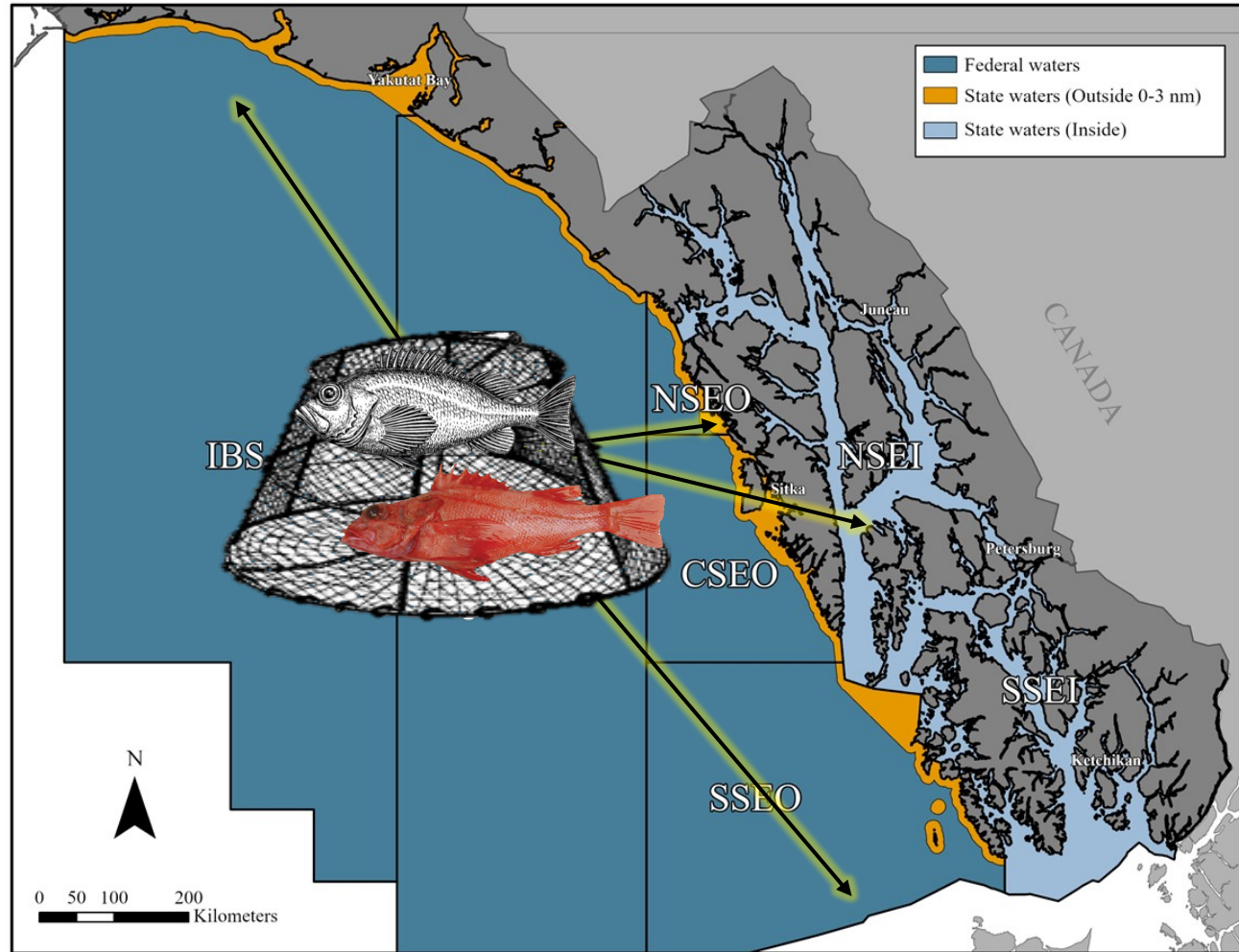




Rockfish

Proposal 219:
allow rockfish to
be taken as bycatch
in pot gear and sold
per allowable
bycatch limits

Proposal 222:
require full
retention of all
rockfish while
fishing for
groundfish or
halibut



Other groundfish

Spiny dogfish

- Primarily caught as bycatch – low retention
- No directed fisheries in state or federal waters in the Gulf of Alaska
- Can fish under Commissioner's Permit

Proposal 232: create a directed fishery for spiny dogfish in state waters

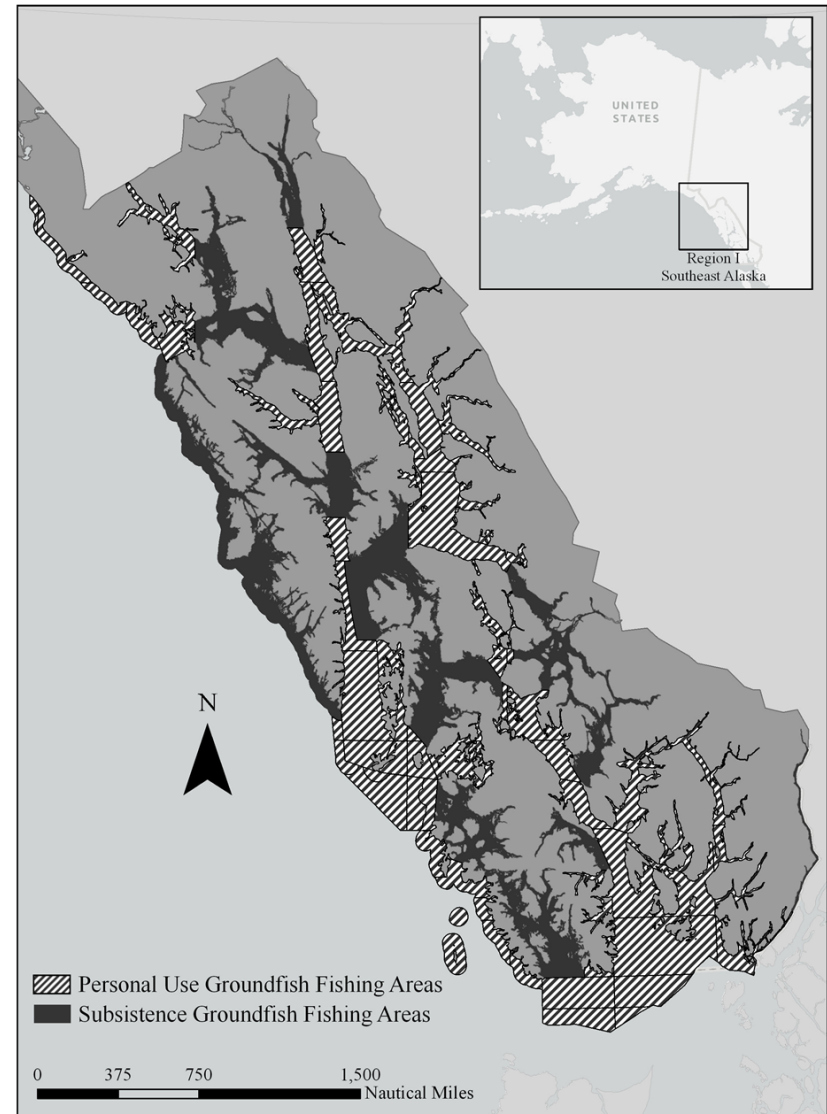


Other groundfish

Personal use groundfish

- Bottomfish may be taken only by longline or hand held line, except sablefish (pot, longline, hand held)

Proposal 224: add rod and reel as legal gear type to personal use bottomfish fishery



Other groundfish

Proposal 224: add rod and reel as legal gear type to personal use bottomfish fishery

Fishery	Gear	Sport license required?	Species	Limit
Sportfish <i>AK resident</i>	Rod and reel	Yes	Black rockfish Lingcod Shortraker rockfish	5 daily 1 daily 1 daily
Personal use <i>AK residents only</i>	Longline or handheld line	Yes	Black rockfish Lingcod Shortraker rockfish	No limit No limit No limit



Questions?